

Report on Historical Funding of South Carolina Institutions of Higher Education

Submitted to:

The Chairman of the South Carolina House of Representatives Ways and Means Committee and
The Chairman of the South Carolina Senate Finance Committee

Prepared by the South Carolina Commission on Higher Education
January 31, 2022



South Carolina
Commission on Higher Education

Access | Affordability | Excellence

Executive Summary

With a few exceptions, since 1896 the state of South Carolina has provided lower levels of financial support to public institutions of higher education than other states, both regionally and nationally. There has been great disparity in any given year in the amount of support given to each public institution. Until the late 1960s, South Carolina State University consistently received less per student support than other public institutions.

Between 1896 and 1946, South Carolina's six public institutions of higher education experienced inconsistent levels of state general fund appropriations per student. Over the same period, the University of South Carolina and The Citadel consistently received greater general fund state support per student than any other institutions, while South Carolina State consistently received fewer state dollars per student, except for a few years in the 1920s when Clemson received a smaller per student appropriation. Clemson's general revenue appropriations, however, were augmented significantly by Tag tax proceeds, which often equaled or exceeded the general fund appropriation. On the whole, scholars view this era as one of limited state support for higher education.

Between 1946 and 1988 public colleges in South Carolina enjoyed an upsurge in enrollment and a sustained influx of federal dollars, but scholars agree that South Carolina's support its institutions of higher education remained below average. The paucity of state support relegated the state to the bottom when compared to other Southern states, at least in the early years after World War II. By the 1970s South Carolina went from spending the least on higher education among other southern states to spending the most on higher education of any southern state. This is also the era in which the state took steps to eliminate the lingering effects of segregation in its higher education system. Most notably, this resulted in South Carolina State expanding its degree offerings and receiving a \$14 million appropriation to hire new faculty and increase salaries of existing faculty.

While South Carolina went from spending the least to the most on higher education by the mid-1970s, it has fallen back toward the middle among southern states although it still remains above regional and national averages. Recessions in 2002 and again in 2008 took a toll on higher education in South Carolina. For many institutions the years leading up to the 2002 recession were the high point of their state appropriations. Recurring appropriations declined each fiscal year from 2003 to 2005, slowly ticked upward in fiscal years 2006 to 2008, but plummeted in FY 2009 and over the next four years fell by 43 percent. In FY 2013 recurring dollars began to increase, but by FY 2020 had not returned to 2008 levels. Since 2001 appropriations per FTE (including financial aid) have declined by 18.9 percent, about four points above the national average, but increased by 21 percent in 2015, one of the largest increases in the nation.

Table Index

Table 1: Funding Sources for South Carolina State College, 1898-1912.....	12
Table 2: State General Fund Appropriations per Student, 1896-1946.....	14
Table 3: State of South Carolina College Bond Bill, 1937.....	14
Table 4: State General Fund Appropriations per Student, 1946-1987.....	18
Table 5: State General Fund Appropriations per Student, 1987-2020.....	20
Table 6: Total Federal Funds per Student, 1987-2020.....	22
Table 7: State General Fund Appropriations per Student, 1971-2020.....	24
Table 8: Total Federal Funds per Student, 1971-2020.....	24
Table 9: State General Fund Appropriations per Student, 1974-2020.....	26
Table 10: Total Federal Funds per Student, 1974-2020.....	28

Figure Index

Figure 1: State General Fund Appropriations per Student.....	8
Figure 2: State General Fund Appropriations per Student, FY 1986-1946.....	13
Figure 3: State General Fund Appropriations per Student, FY 1945-1987.....	17
Figure 4: State General Fund Appropriations per Student, FY 1987-2020.....	19
Figure 5: Total Federal Funds per Student, FY 1987-2020.....	21
Figure 6: State General Fund Appropriations per Student, FY 1971-2020.....	23
Figure 7: Total Federal Funds per Student, FY 1987-2020.....	25
Figure 8: State General Fund Appropriations per Student, FY 1974-2020.....	27
Figure 9: Total Federal Funds per Student, FY 1974-2020.....	29

Methodology

Commission on Higher Education (CHE) staff consulted with the public colleges and universities to collect the required data. Staff also used the Commission on Higher Education Management Information System (CHEMIS), as well as data available through the federal Integrated Postsecondary Education Data System (IPEDS). When electronic data was not available staff searched through state budget books and other archival sources as far back as 1896. Staff also consulted numerous histories of South Carolina colleges and universities, as well as several historical studies related to state appropriations for higher education. All funding data is reported as nominal values and is not adjusted for inflation. All sources are listed in the appendix to this report.

State general fund appropriations data was collected from published versions of the South Carolina General Appropriations Bill. When possible, the final allocation for the prior fiscal year data was collected; however, this data was not available for every year. When prior year appropriations data was not reported, data from the ratified or last published version of the bill was reported. The state appropriations funds collected for this report were the total amounts directly allocated to the individual institutions unless otherwise specified. Any additional state funds an institution may have received either as pass through monies from another state agency or as funds allocated from sources other than the state general fund, such as the state lottery fund, were not collected for this report. Additionally, the General Appropriations Bill is not an audited financial report and the data may differ from the amount of state funds reported as revenue in audited financial reports.

In conducting this study CHE staff used available fall full-time equivalent (FTE) enrollment data in the Commission on Higher Education Information System (CHEMIS) as reported in the annual CHE Statistical Abstract. CHEMIS has data dating back to the fall 1969 semester. Headcount enrollment data prior to fall 1969 was collected from several sources because single source of FTE enrollment data was not available. For enrollment data prior to 1969 staff used data from the websites of the University of South Carolina and Clemson University. Enrollment data for South Carolina State University, The Citadel, and Winthrop University were collected from the institution or culled from the South Carolina Department of Education State Superintendent of Education annual reports. Data for some years was not available or not reported.

Due to changes in data reporting standards, the enrollment data in this report shifts from headcount enrollments for the 1968-69 academic year to fall FTE enrollments in 1969. The impact of this change in metrics varies between the institutions.

Furthermore, neither the headcount enrollment nor fall FTE enrollment aligns with the fiscal year which funds are reported by. The tables are structured so the fall FTE enrollment data aligns with the first year of the fiscal year. For example, the fall FTE enrollments for 2019 are aligned with the funding data for FY 2020, which began in July 2019. The headcount enrollments also align to the first reported year of the fiscal year for fiscal years that are split across two

calendar years. For fiscal years beginning on January 1, headcount enrollment aligns with the fall period of the fiscal year. For consistency, this report uses the term “per student” to refer to the funding ratios calculated from both headcount enrollment and fall FTE enrollments.

The best available source for federal funds for this report was the federal Integrated Postsecondary Education Data System (IPEDS). The decision was made to report the total amount of Federal funds an institution received each fiscal year due to changes in accounting and the reporting practices of IPEDS. The sources of funds included in the total federal funds reported are federal appropriations, operating federal grants and contracts, non-operating federal grants and contracts, and undefined federal grants and contracts. It is important to note Pell Grant money is included in the reported federal grants and contract money. IPEDS does not have any data prior to FY 1987.

For years prior to 1987 CHE staff searched for data on federal funding but it was difficult to find. Both Clemson University and South Carolina State University are land-grant institutions. As such, each received federal funds, under the terms of the Morrill Acts of 1862 and 1890, from the sale of lands in the western United States. CHE staff were only able to find data for a few years for each institution.

As land-grant institutions both Clemson University and South Carolina State University have public service missions, (PSA). The state general fund appropriations identified as allocated to Clemson University PSA and SC State University PSA were reported separately from the state general fund appropriations allocated for the educational and general (E&G) purpose activities of these institutions. However, it was not possible to distinguish between these two activities in the federal data from IPEDS. The decision was made to use only the educational and general purpose state allocations in the data visualizations because these data were comparable to the data from the other institutions. Data for Clemson University (E&G) and SC State University (E&G) can be found in Appendix Tables 1 and 2. Data for Clemson University (PSA) and SC State University (PSA) can be found in Appendix Tables 19 and 20.

State general funds for the state’s technical colleges is allocated as a lump sum to the State Board for Technical and Comprehensive Education. The decision was made to report this aggregated data from the General Appropriations Bills because it aligned with the state appropriations reported for the other institutions. Not all of the funds allocated to the State Board for Technical and Comprehensive Education go to the individual technical colleges. The data visualizations show only the state appropriations allocated for the technical colleges (See Appendix Table 12) because this data aligns better with the data for the other two-year public institutions. Appendix Table 22 shows the data for the total state appropriations allocated to the State Board for Technical and Comprehensive Education.

Data for the Medical University of South Carolina was not included in any visuals because the institution is a special purpose institution; therefore, both the enrollments and funding processes are not directly comparable to the other public institutions. Data for MUSC can be found in Appendix Table 21.

Capital appropriations are not broken out because it was not part of the study's scope and because of the difficulty finding and recording capital expenditures from non-electronic archival source material. The State Appropriation Bill for a given year sometimes listed capital appropriations separately but in others CHE staff could find only a total appropriation amount. There are examples of capital appropriations for some years and others have been gleaned from various published histories.

The analysis considers three historical periods. The first runs from the earliest days of public higher education in South Carolina (c. 1800) through 1945; the second from 1946 to 1987; and the third from 1988 to the present.

Most institutions have gone through multiple name changes but throughout this report each institution is referred to by its current name. A table with each institution's naming history is included in the appendix. Additionally, staff grouped four-year institutions primarily by when they began receiving state support. Thus, Clemson, The Citadel, the University South Carolina, Winthrop, and South Carolina State are grouped together and discussed in each of the three eras in which the data is split. Coastal Carolina University, the College of Charleston, Francis Marion University, Lander University, the University of South Carolina Aiken, the University of South Carolina Beaufort, and the University of South Carolina Upstate.

Introduction

Longitudinal studies such as this provide an opportunity to look for patterns in the data and historical record, and to assess the impact of decisions made many decades ago on contemporary conditions and circumstance. Simply listing data in tables or charts, however, can obscure the historical or economic context in which the data were created. Moreover, as the Proviso specifically requests the Commission to analyze the data, staff have drawn what conclusions it can about the state's history of funding higher education. Our analysis is limited by the availability of data before the 1980s, most of which had to be gleaned from the pages of state budget books and other sources. Data is missing or incomplete for some years. Fiscal or enrollment data which was reported inconsistently over the years further complicated this work. Despite these challenges, CHE has confidence in the data and what it means. CHE staff believe this report provides an objective context for understanding the current state of higher education financing in South Carolina.

The study specifically asked for data to be reported both in the aggregate and by FTE. For ease of comparison the term "student" and "FTE" are used interchangeably in this study. Each of these metrics has their limitations and may obscure as much as they reveal. An institution that has sources of revenue other than state support, from auxiliary enterprises or other state or federal allocations, may have a low per student/FTE appropriation but financially may be in a stronger position than an institution with a high per student/FTE appropriation. This is true, for example, for Clemson University in the first half of the twentieth century. Clemson's general fund appropriation typically was smaller—and often significantly smaller—than other state institutions. Clemson, however, was the only college that received funds from the state fertilizer

tax, which typically exceeded general fund appropriations. Both Clemson and South Carolina State University, as land-grant institutions, received federal funds through the 1862 and 1890 Morrill Acts and other federal programs, funds that were not available to other state institutions.

A gap exists between the amount of funding the state has provided to an institution and the adequacy—actual or perceived—of that level of funding by the institution. Similarly, what constitutes “adequate funding” has never been defined well or clearly, further contributing to debates over funding gaps. This report provides no conclusions regarding the “adequacy” of state support for higher education. Rather, it focuses on the relative levels of general fund appropriations provided by the state to its public institutions of higher education.

Staff determined it worth including in this study the views of scholars who have studied in depth the history of higher education and higher education funding in this state, in particular histories of specific institutions. In his history of the University of South Carolina, for example, Henry H. Lesesne writes about the “chronic underfunding of public higher education in South Carolina,” and that “for most of the twentieth century” USC “struggled with a level of funding well below that of its peers.” Lesesne further notes that at the turn of the twentieth century USC competed for funding with three recently established institutions—Clemson, Winthrop, and South Carolina State—and that posits that perhaps six public institutions of higher education were too many for a poor state like South Carolina to support.¹ Likewise, William C. Hine, in his history of South Carolina State University, writes of the “miserly funding” the state provided to the institution “meant that faculty and students build most of the original campus facilities.”² The Southern Association of Colleges and Schools, founded in 1895, did not accept any public or private South Carolina college for membership until USC joined in 1917, no doubt in part because of its lack of state support.³ Staff have turned to studies such as Lesesne’s and Hine’s to fill some of the gaps in the historical data and to provide as clear a context as possible for understanding how the state historically has funded higher education.

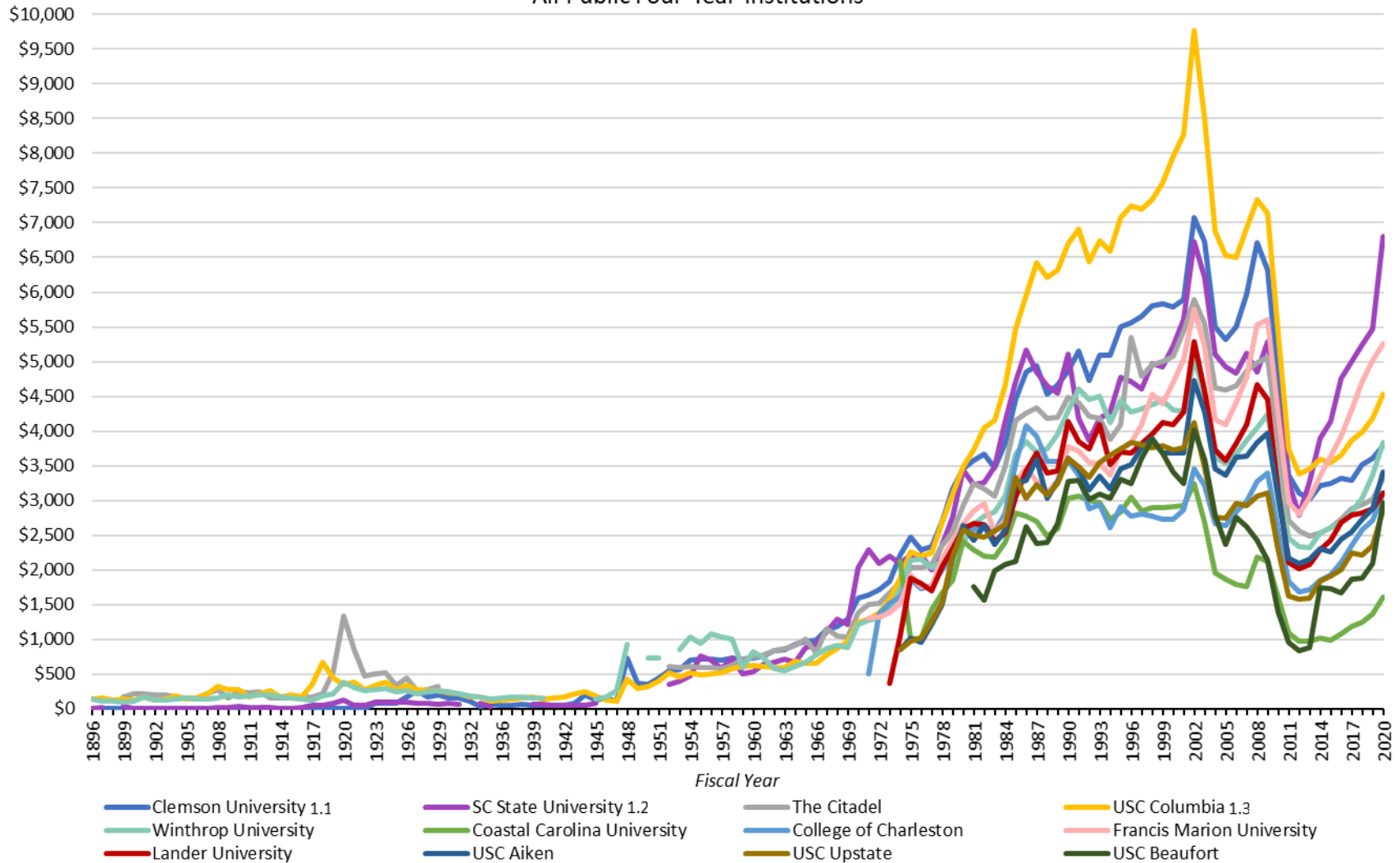
For the first half of the nineteenth century the state of South Carolina provided financial support only to two institutions of higher learning: the University of South Carolina and The Citadel. State support consisted of direct appropriations for operations and some capital improvements. Between the end of the Civil War and the turn of the twentieth century, three more state-supported institutions were added: Clemson Agricultural College (1889), Winthrop Normal and Industrial College of South Carolina (1893), and the Colored Normal, Industrial, Agricultural, and Mechanical College of South Carolina (1896). In 1913, the state began providing support to the Medical College of the State of South Carolina. Until the late 1950s these were the only state-supported institutions of higher learning. In the 1960s and 1970s the number of

¹ Henry L. Lesesne, *A History of the University of South Carolina, 1940-2000*, (Columbia: University of South Carolina Press, 2001), xv.

² William C. Hine, *South Carolina State University: A Black Land-Grant College in Jim Crow America*, (Columbia: University of South Carolina Press, 2018), xv

³ Walter B. Edgar, *South Carolina: A History*, (Columbia: University of South Carolina Press, 1998), 463.

Figure 1: State General Fund Appropriations per Student
All Public Four-Year Institutions



^{1.1} The Clemson University data shown are the total state appropriations reported to Clemson University for educational and general activities.

^{1.2} The SC State University data shown are the total state appropriations reported to SC State University for educational and general activities

^{1.3} Data for USC Columbia includes the data for the medical schools starting in FY 1978.

publicly supported higher education institutions grew to thirty-three, the current number of publicly supported institutions of higher learning in South Carolina.

Evolution of Public Higher Education Institutions in South Carolina		
Name of Institution	Year Established/Chartered	Year State Support Began
University of South Carolina	1801	1801
The Citadel, The Military College of South Carolina	1822	1842
Winthrop University	1886	1886
Clemson University	1889	1889
South Carolina State University	1896	1896
Medical University of South Carolina	1823	1913
University of South Carolina Beaufort	1959	1959
Coastal Carolina University	1959	1959
University of South Carolina-Lancaster	1959	1959
Francis Marion University	1961	1961
University of South Carolina Aiken	1961	1961
Greenville Technical College	1961	1961
Spartanburg Community College	1961	1961
Central Carolina Technical College	1962	1962
Tri-County Technical College	1962	1962
York Technical College	1962	1962
Midlands Technical College	1963	1963
Florence-Darlington Technical College	1963	1963
Trident Technical College	1964	1964
University of South Carolina-Salkehatchie	1965	1965
University of South Carolina-Union	1965	1965
Horry-Georgetown Technical College	1966	1966
University of South Carolina-Sumpter	1966	1966
University of South Carolina Upstate	1967	1967
Northeastern Technical College	1967	1967
Orangeburg-Calhoun Technical College	1968	1968
Williamsburg Technical College	1969	1969
College of Charleston	1785	1970
State Board for Technical and Comprehensive Education	1972	1972
Aiken Technical College	1972	1972
Lander University	1973	1973
Midlands Technical College	1974	1974
Piedmont Technical College	1974	1974
Technical College of the Lowcountry	1979	1979
Denmark Technical College	1980	1980

Dates for technical colleges are taken from <http://sctechsystem.edu/50thAnniversary/index.html>

State Funding of Higher Education, 1801-1945

In the antebellum period, according to the historian Daniel Walker Hollis, the state of South Carolina provided “generous” financial support to South Carolina College, the institution known today as the University of South Carolina. Hollis argues South Carolina was probably the first American college supported wholly by state resources. The General Assembly provided \$50,000 and a \$6,000 annual appropriation when the college was chartered in 1801. In 1807, the General Assembly gave the college \$10,000 for “various and sundry” repairs, and regularly provided funding for capital projects such as the president’s house, faculty residences, and commons hall for students. Hollis notes that the “liberal spirit of the Legislature” continued until

the Civil War began.⁴ From its founding in 1801 through 1913 the State of South Carolina appropriated \$2,736,663 to the college, as well as another \$357,000 for buildings.⁵ That “liberal spirit,” however, did not continue for the first quarter of the twentieth century. The historian Henry H. Lesesne argues that low levels of state support made the University of South Carolina “one of the weakest state institutions in the South and not even a leader within the Palmetto State.”⁶

The Citadel was established in 1822 as a guardhouse for the city of Charleston. In 1842 the General Assembly began providing financial support when it merged the State Arsenal with the State Citadel to create the South Carolina Military Academy. The Civil War and Reconstruction halted instruction at The Citadel and during the Reconstruction state support was lean. In 1878, for example, the General Assembly appropriated funds to the University of South Carolina and Claflin College but not to The Citadel. In the 1881-82 legislative session legislators concluded the state was too poor at that time to support a third institution of higher education.⁷ By the end of the nineteenth century the institution had reestablished itself with support from the state. Students included “paying cadets,” the sons of wealthy South Carolinians, and “beneficiary cadets,” who earned state-supported, competitive, full-scholarships to attend the school.⁸ By the 1920s, with state support The Citadel had expanded to its current 200-acre location.

In 1886 the Peabody Education Fund endowed the Winthrop Training School as a teacher preparation school for women. It began offering classes in Columbia before moving to its present location in Rock Hill in 1895. A year later the state granted the institution a charter and provided a \$150 monthly scholarship to two students from each county to attend the institution. The General Assembly in 1891 formally established the “Winthrop Normal and Industrial College of South Carolina for the education of white girls.” When the school relocated to Rock Hill, the state promised buildings and equipment, as well as “the labor of 100 convicts for three years.” In 1920 the school’s name changed to Winthrop College, the South Carolina College for Women.⁹

The state began providing support to the Medical College of South Carolina in 1914, although the General Assembly had formally established the institution in 1823. The move was prompted in part by the publication in 1910 of the “Flexner Report,” which was critical of the institution. State support allowed the institution to add new programs and expand its footprint in Charleston.¹⁰

⁴ Daniel Walker Hollis, *University of South Carolina, Volume 1: South Carolina College*. (Columbia: University of South Carolina Press, 1951), 4, 23, 49, 73.

⁵ Edwin L. Green, *A History of the University of South Carolina*. Columbia: The State Company, 1916. pp. 294-308.

⁶ Henry L. Lesesne, *A History of the University of South Carolina, 1940-2000*, (Columbia: University of South Carolina Press, 2001), 3.

⁷ Rod Andrew, Jr., *Long Gray Lines: The Southern Military School Tradition, 1839-1915*, (Chapel Hill: University of North Carolina Press, 2004), 38.

⁸ W. Gary Nichols, "The Citadel," in *South Carolina Encyclopedia*. Available: <https://www.scencyclopedia.org/sce/entries/the-citadel/>

⁹ "Winthrop University Chronology", <https://www.winthrop.edu/aboutus/history/chronology.aspx> : Winthrop University, South Carolina Encyclopedia, <https://www.scencyclopedia.org/sce/entries/winthrop-university/>

¹⁰ Jane McCutchen Brown, "Medical University of South Carolina," *South Carolina Encyclopedia*. Available: <https://www.scencyclopedia.org/sce/entries/medical-university-of-south-carolina/>

In 1889, the state accepted the conditions of Thomas Clemson's will and the Clemson Agricultural College became a state-chartered institution. According to a history of the university posted on the Clemson website, in accepting the terms of Clemson's will the state provided general revenue for operations and facilities. Research did not reveal any general revenue appropriations to Clemson from 1896 through 1922. The General Assembly did provide for state fertilizer tax revenues to support only Clemson; no other schools received any of the fertilizer tax revenue. Additionally, the state furnished convict labor, mostly African American, to clear the land and construct facilities. The number of convict laborers reached as high as 150 and averaged 47 annually over the years of construction.¹¹

The state established the Colored Normal, Industrial, Agricultural, and Mechanical College of South Carolina (South Carolina State) in 1896, the same year the Supreme Court ruled in *Plessy v. Ferguson* that "separate but equal" public facilities did not violate the Fourteenth Amendment's guarantee of equal protection. The institution offered instruction to a range of students, from elementary age through high school and college. As the historian William C. Hines writes, the institutions operated for 70 years as the only public institution of higher education in South Carolina open to black people but for its "first thirty years it functioned primarily as a secondary school that offered vocational training in agricultural and mechanical subjects and prepared teachers for the black public schools."¹²

Both Winthrop and SC State were normal schools that prepared high school students to be teachers in the state's public schools. In its early years SC State's enrollments also included younger students. In 1933 SC State closed its campus high school.¹³

Clemson University and South Carolina State University are the state's two land-grant universities. Clemson became a land-grant institution under the terms of the 1862 Morrill Act, while South Carolina State's status is from the 1890 Morrill Act. In addition to the state support listed above, Clemson could draw on the endowment bequeathed by Thomas Clemson, land-grant funds from the 1862 Morrill Act, and federal funds for agricultural experimentation per the Hatch Act (1887). The 1890 Morrill Act required funds to be distributed to the black and white land grant colleges in "a just and equitable" manner. Hine notes that while South Carolina law required Morrill Act funds be allocated equally between Clemson and SC State, the General Assembly did not divide the monies equally.¹⁴

¹¹ <https://www.clemson.edu/about/history/notable-dates.html>

¹² William C. Hine, *South Carolina State University: A Black Land-Grant College in Jim Crow America*, (Columbia: University of South Carolina Press, 2018), xv.

¹³ William C. Hine, "South Carolina State University," in *South Carolina Encyclopedia*, <https://www.scencyclopedia.org/sce/entries/south-carolina-state-university/>

¹⁴ William C. Hine, *South Carolina State University: A Black Land-Grant College in Jim Crow America*, (Columbia: University of South Carolina Press, 2018), 35-36.

	1898	1903	1908	1912
Morrill Act (1862)	\$ 5,754	\$ 5,754	\$ 5,754	\$ 5,754
Morrill Act (1890)	\$ 10,717	\$ 12,441	\$ 12,893	\$ 22,499
Federal Subtotal	\$ 16,471	\$ 18,195	\$ 18,647	\$ 28,253
State Appropriation	\$ 10,000	\$ 8,500	\$ 7,800	\$ 19,000
Farm Revenue	\$ 1,022	\$ 968	\$ 929	\$ 1,664
Total	\$ 27,493	\$ 27,663	\$ 27,376	\$ 48,917
Percent from Federal Sources	59.9%	65.8%	68.1%	57.8%

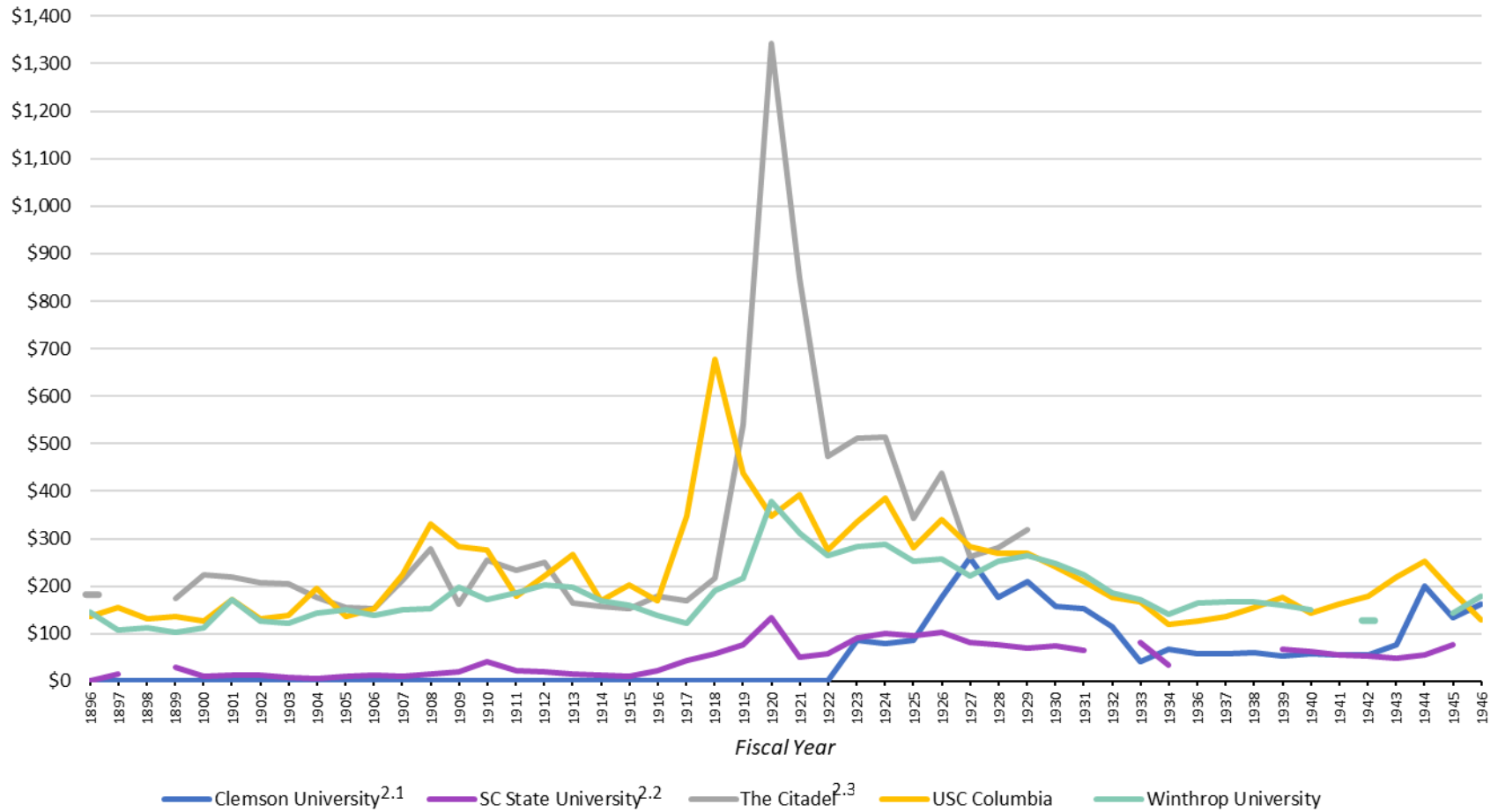
Although Clemson received no direct state general fund appropriation until the 1920s, it was the sole recipient of the proceeds from the state's sales tax on fertilizer, known as the Tag tax. While the Tag tax fluctuated annually it was a significant source of revenue, amounting to more than \$200,000 in 1911. According to one source, Clemson earned more from the Tag tax in a single year than SC State did from 15 years of direct state appropriations. Thousands of black farmers purchased fertilizer yet the money went only to Clemson.¹⁶

Figure 2 illustrates per-student state appropriation between 1896 and 1946. All institutions experienced inconsistent levels of state general fund appropriations per student when compared year to year, but there was a general consistency in funding except for the pronounced fluctuations between the end of World War I and start of the Great Depression. The largest range in the amount of state general fund appropriations per student between institutions was \$678.11 (FY 1918) while the smallest range was \$93.37 (FY 1940). SC State and Winthrop both saw their highest allocation per student in FY 1920. The University of South Carolina's appropriations peaked in FY 1918 and Clemson saw its highest allocation in FY 1927. SC State per student allocation increased from \$1 per student in 1896 to \$77 per student in 1945, a significant percentage increase but still below other state institutions. Winthrop declined slightly, from \$147 per student to \$143 per student. Clemson allocations increased from \$86 per student to \$134 per-student, although over a shorter time period (1923-1945). The University of South Carolina also had an increase from \$136 per student in 1896 to \$189 per student in 1945.

¹⁵ Adapted from Reports and Resolutions of the General Assembly of the State of South Carolina for each of the years listed: 1898, 276; 1903, 905; 1908, 1066; 1912, 963, as cited in William C. Hine, *South Carolina State University: A Black Land-Grant College in Jim Crow America*, (Columbia: University of South Carolina Press, 2018), 35.

¹⁶ William C. Hine, *South Carolina State University: A Black Land-Grant College in Jim Crow America*, (Columbia: University of South Carolina Press, 2018), 5, 37.

Figure 2: State General Fund Appropriations per Student, FY 1896-1946
 Four-year Public Institutions Since 1896



^{2.1} The Clemson University data shown are the total state appropriations reported to Clemson University for educational and general activities. No appropriations for educational and general activities were reported prior to the 1923 fiscal year.

^{2.2} The SC State University data shown are the total state appropriations reported to SC State University for educational and general activities.

^{2.3} Enrollment data for the Citadel is unavailable between the 1930 and 1946 fiscal years.

Institution	1896	1946	Percentage Change
Clemson University ¹⁷	\$85.96	\$134.23	56.16%
SC State University ¹⁸	\$0.97	\$77.31	7885.99%
The Citadel ¹⁹	\$194.44	\$319.22	64.17%
USC Columbia	\$135.87	\$188.57	38.79%
Winthrop University	\$146.70	\$143.15	-2.42%

Between 1896 and 1945 the University of South Carolina and The Citadel consistently received greater general fund state support per student than any other institution. South Carolina State consistently received fewer state dollars per student, except for a few years in the 1920s when Clemson received a smaller per student appropriation. Clemson's general revenue appropriations, however, were augmented significantly by Tag tax proceeds, which often equaled or exceeded the general fund appropriation. Nor was other state support distributed equally or equitably. South Carolina State students, for example, were not eligible to receive county scholarships subsidized by the state legislature, as did students who attended the other public institutions.

It would be a full ten years after its founding before the South Carolina State campus had electricity, an adequate water supply, and a sewage system.²⁰ In 1937, the state issued a bond bill in which SC State received one-fourth the allocation of Clemson and The Citadel, and less than a quarter of USC's and Winthrop's appropriation.²¹

Institution	Amount Authorized	IHE % of State Total	Purpose
Winthrop University	\$ 350,000.00	25.9%	Auditorium or classroom building
University of South Carolina	\$ 325,000.00	24.1%	Library or administration building
Clemson University	\$ 300,000.00	22.2%	Textile Building
The Citadel	\$ 300,000.00	22.2%	Barracks
South Carolina State University	\$ 75,000.00	5.6%	Library/dormitory
Total	\$1,350,000		

Summary: 1896-1945

¹⁷ The Clemson University data shown are the total state appropriations reported to Clemson University for educational and general activities. No appropriations for educational and general activities were reported prior to the 1923 fiscal year.

¹⁸ The SC State University data shown are the total state appropriations reported to SC State University for educational and general activities

¹⁹ No enrollment data is available after 1930.

²⁰ William C. Hine, *South Carolina State University: A Black Land-Grant College in Jim Crow America*, (Columbia: University of South Carolina Press, 2018), 60.

²¹ Copy of Act to Provide for the Construction at State Educational Institutions," Folder 1, Library Building, HCSCSU, as cited in William C. Hine, *South Carolina State University: A Black Land-Grant College in Jim Crow America*, (Columbia: University of South Carolina Press, 2018), 137.

²² Copy of Act to Provide for the Construction at State Educational Institutions," Folder 1, Library Building, HCSCSU, as cited in William C. Hine, *South Carolina State University: A Black Land-Grant College in Jim Crow America*, (Columbia: University of South Carolina Press, 2018), 137

State support for public higher education was remarkably consistent from 1896 to 1945, except for wide fluctuations in the 1920s. The state also consistently provided significantly less financial support to South Carolina State. Its per student appropriation in 1896 was less than one dollar; by 1945 it had risen to about \$77 per student, well below the annual per student appropriations received every year between 1896 and 1945 by the University of South Carolina, Winthrop, and The Citadel. In some years SC State's state appropriation was larger than Clemson's, but that does not account for Clemson being the sole beneficiary of the state's fertilizer tax. Indeed, Clemson fared better than most institutions because of this advantage. Lesesne points out that in 1939-1940 Clemson's general fund appropriation was less than USC's but it received more than \$51,000 from the Morrill Act, another some \$300,000 for agricultural extension and research, and the proceeds from the fertilizer tax, which regularly topped \$200,000.

On the whole, however, most scholars view this era as one of limited state support for higher education. As the historian Philip G. Grose notes, the state "struggled" to fund six institutions of higher education. He argues that from its founding South Carolina State operated with a "chronic lack of funding support from the state" and even by the end of World War II the institution still experienced "serious funding shortages and lagged far behind the state's white institutions."²³

State Funding of Higher Education, 1946-1987

Enrollment in the nation's colleges and universities soared after World War II, largely because of thousands of veterans—black and white—seeking to use the benefits from the Servicemen's Readjustment Act of 1944, or G.I. Bill. By the 1960s, women were attending college in greater numbers, further swelling enrollment numbers. At the same time, the first cohort of the Baby Boom generation came of college-age, adding thousands more students each year. This trend was generally true in South Carolina, too, although the size of the enrollment increase varied greatly by institution. The University of South Carolina saw enrollment jump from 2,693 in FY 1946 to 11,932 in FY 1969, an increase of 343 percent. Clemson's growth was equally as impressive, growing by more than 500 percent over the same period. Both Winthrop and The Citadel more than doubled their enrollment. South Carolina State, however, saw much smaller gains. Between FY 1947 and FY 1969 its enrollment grew by only 3.5 percent, well below the state's other public institutions of higher education. According to the historian William C. Hine, SC State did not have the facilities—classrooms and dormitories—to accommodate more students.²⁴

Additionally, because of the Cold War between the United States and the Soviet Union, the federal government poured billions of dollars into the nation's higher education system. Much of the funding went to basic research related to national defense but a significant amount of money was focused on efforts to help the United States win allies and support against the USSR,

²³ Philip G. Grose, *South Carolina at the Brink: Robert McNair and the Politics of Civil Rights*, (Columbia: University of South Carolina Press, 2006), 178.

²⁴ William C. Hine, "South Carolina State University," *South Carolina Encyclopedia*. Available: <https://www.scencyclopedia.org/sce/entries/south-carolina-state-university/>

such as agricultural and economic development. The federal government continued to expand subsidies to students as well, first with the GI Bill but later with low-cost student loans and Pell Grants.

In response, 27 new distinct public institutions of higher learning emerged between 1959 and 1980, including a what would eventually become a 16-institution state technical college system. In 1970 the state accepted the College of Charleston, which for nearly 200 years had been a private college, as a public institution. In 1973 Lander University transitioned from a private to a public institution. Both Francis Marion University and Coastal Carolina began as branch campuses of the University of South Carolina but in 1970 FMU became an autonomous public college and in 1993 Coastal Carolina would do the same. The University of South Carolina added three four-year campuses (in Aiken, Beaufort, and Spartanburg) as well as four two-year campuses (Lancaster, Salkehatchie, Sumpter, Union). And in 1972, the State Board for Technical and Comprehensive Education consolidated oversight of the state's technical education centers, which soon would become technical colleges.

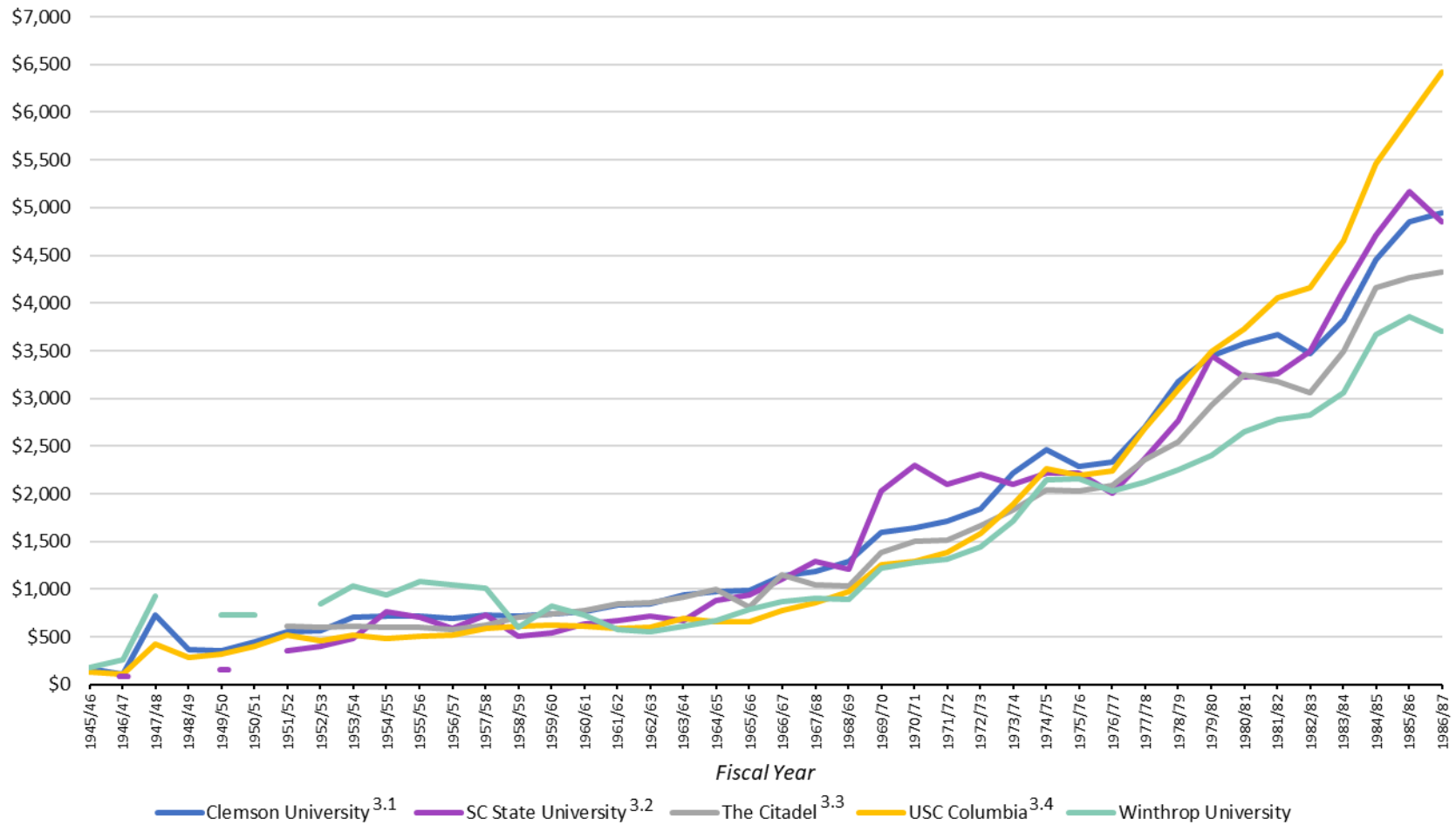
Despite the upsurge in enrollment and the influx of federal dollars, scholars agree that the South Carolina for the most part did not support its institutions of higher education very well. In FY 1948, for example, less than six percent of the state's total revenue was allocated to its six public colleges. For comparison, in 2000, the state allocated about 15 percent of general revenue funds to thirty-three institutions of higher education. The paucity of state support relegated the state to the bottom when compared to other Southern states, at least in the early years after World War II.²⁵ After 1960, however, South Carolina went from spending the least on higher education among other southern states to spending the most on higher education of any Southern state. In 1963-64, South Carolina appropriated 6.2 percent of its tax revenue to higher education. A decade later it appropriated 17.4 percent of tax revenues to higher education, nearly tripling the allocation. The appropriations per \$1,000 of personal income grew from \$2.78 in 1960 to \$17.75 in 1975.²⁶

Figure 3 shows all public institutions generally experienced a continual increase in the amount of state general fund appropriations per student between FY 1946 and FY 1987. The sole exception is Winthrop University between FY 1957 and FY 1963. State general fund appropriations per student for Clemson University, SC State University, The Citadel, USC Columbia, and Winthrop University were more similar between FY 1946 and 1968 than afterwards. The largest disparity in state general fund appropriations per student between institutions was \$2,720.92, which occurred in FY 1987. The amount of state general fund appropriations per student enrollment peaked for SC State University and Winthrop University in FY 1986. The highest in-state general fund appropriations per student enrollment for Clemson University, The Citadel, and USC Columbia was FY 1987. All institutions in Figure 3 experienced

²⁵Henry L. Lesesne, *A History of the University of South Carolina, 1940-2000*, (Columbia: University of South Carolina Press, 2001), 53, 99.

²⁶ Henry L. Lesesne, *A History of the University of South Carolina, 1940-2000*, (Columbia: University of South Carolina Press, 2001), 246.

Figure 3: State General Fund Appropriations per Student, FY 1945 - 1987
 Four-Year Public Institutions Since 1896



^{3.1} The Clemson University data shown are the total state appropriations reported to Clemson University for educational and general activities.

^{3.2} The SC State University data shown are the total state appropriations reported to SC State University for educational and general activities.

^{3.3} Enrollment data for the Citadel is unavailable between FY 1946 and 1951.

^{3.4} Data for USC Columbia includes the data for the Columbia medical school starting in FY 1978.

an overall increase in the amount of state general fund appropriations per student enrollment during the fiscal years reported.

Institution	1946	1987	Percentage Change
Clemson University ²⁷	\$134.23	\$4,944.92	3583.97%
SC State University ²⁸	\$77.31	\$4,848.51	6171.62%
The Citadel ²⁹	\$615.21	\$4,329.85	603.80%
USC Columbia	\$188.57	\$6,423.49	3306.47%
Winthrop University	\$143.15	\$3,702.56	2486.58%

It is important to note, too, that during this era South Carolina took steps to eliminate the lingering effects of segregations in the higher education system, with South Carolina State at the center of these efforts. In addition to expanding degree offerings, the General Assembly appropriated \$14 million to the college to hire new faculty and increase salaries of existing faculty.³⁰

State Funding of Higher Education, 1988-2021

As mentioned above, South Carolina went from spending the least to the most on higher education (as a percentage of total expenditures) by the mid-1970s. By the late 1980s, however, it fell back toward the middle among Southern states although still remained above regional and national averages.³¹ Like the rest of the nation, two recessions in the first decade of the twenty-first century took a significant toll on higher education in South Carolina. For many institutions the years leading up to the 2002 recession were the high point of their state appropriations. Recurring appropriations declined each fiscal year from 2003 to 2005. They slowly ticked upward in fiscal years 2006, 2007, and 2008, but plummeted in FY 2009 during the Great Recession. In FY 2008 the state appropriated \$863,769,944 to public higher education but only \$664,786,680 the following year, a decrease of 30 percent. Between FY 2009 and FY 2012 recurring appropriations fell by another 43 percent. In FY 2013 recurring dollars began to increase but by FY 2020 had not returned to 2008 levels.

²⁷ The Clemson University data shown are the total state appropriations reported to Clemson University for educational and general activities.

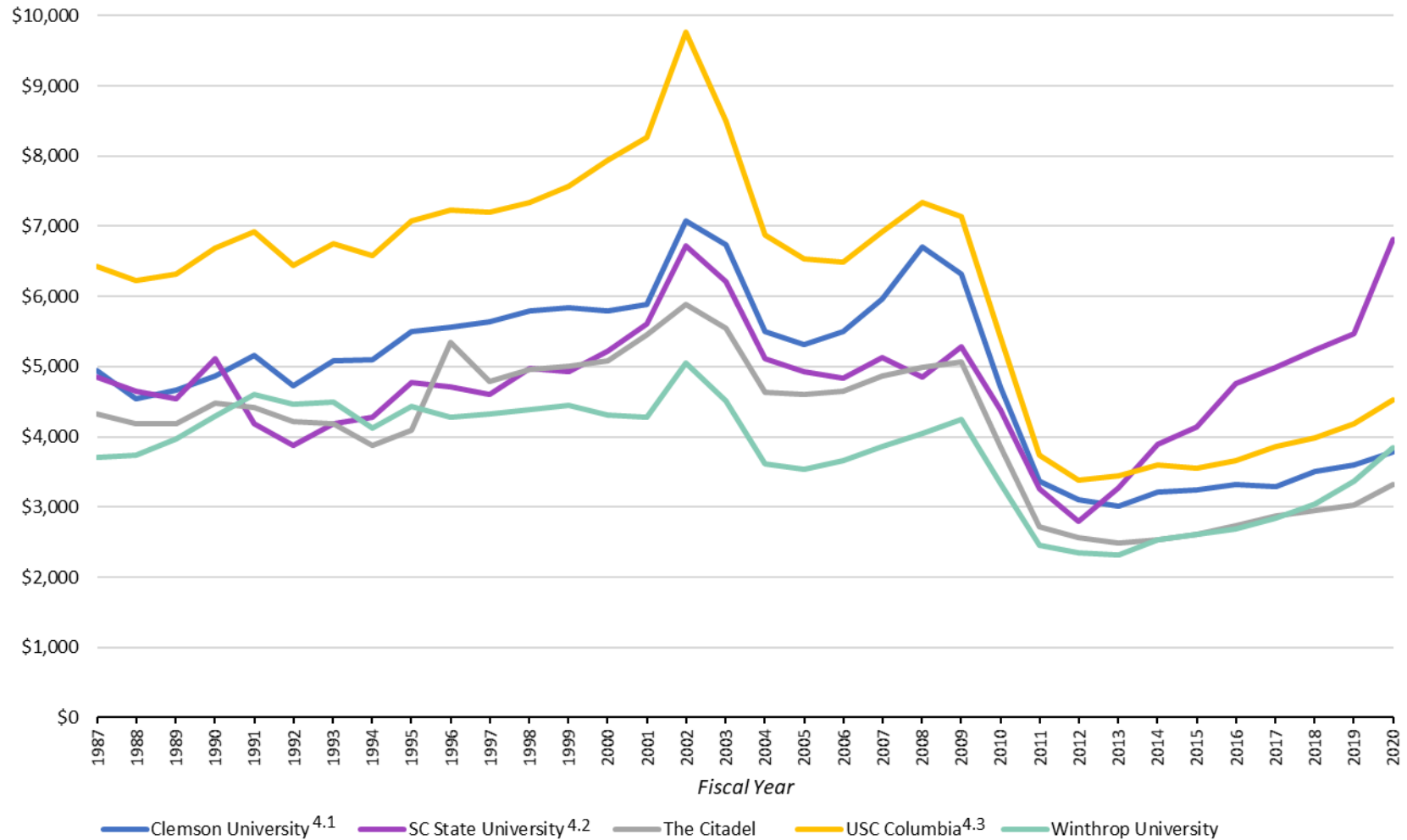
²⁸ The SC State University data shown are the total state appropriations reported to SC State University for educational and general activities.

²⁹ No enrollment data is available before 1952.

³⁰ William C. Hine, *South Carolina State University: A Black Land-Grant College in Jim Crow America*, (Columbia: University of South Carolina Press, 2018), xviii.

³¹ Henry L. Lesesne, *A History of the University of South Carolina, 1940-2000*, (Columbia: University of South Carolina Press, 2001), 326.

Figure 4: State General Fund Appropriations per Student, FY 1987 - 2020
 Four-Year Public Institutions Since 1896



^{4.1} Clemson University data shown is the total state appropriations reported to Clemson University for educational and general activities.
^{4.2} South Carolina State University data shown is the total state appropriations reported to South Carolina State University for educational and general activities.
^{4.3} Data for USC Columbia includes the Columbia medical school and, starting in FY 2013, the Greenville medical school.

The state general fund appropriations per student for Clemson University, SC State University, The Citadel, USC Columbia, and Winthrop University were most similar during the five years immediately following the 2008 recession. The largest range in the amount of state general fund appropriations per student between institutions was \$4,728.54, which occurred in FY 2002. The smallest range in the amount of state general fund appropriations per student between institutions was \$1,039.39, which occurred in FY 2012. The amount of state general fund appropriations per student peaked for SC State University in FY 2020, however, the peak for all of the other institutions in Figure 3 was FY 2002. State general fund appropriations per student for all institutions in Figure 4 showed declines following the 2001 and 2008 recessions followed by periods of growth, although the growth was more pronounced for Clemson University and USC Columbia following the 2001 recession, and for SC State University following the 2008 recession. SC State University and Winthrop University experienced an overall increase in the amount of state general fund appropriations per student during the fiscal years reported; while Clemson University, The Citadel, and USC Columbia experienced an overall decline in the amount of state general fund appropriations per student.

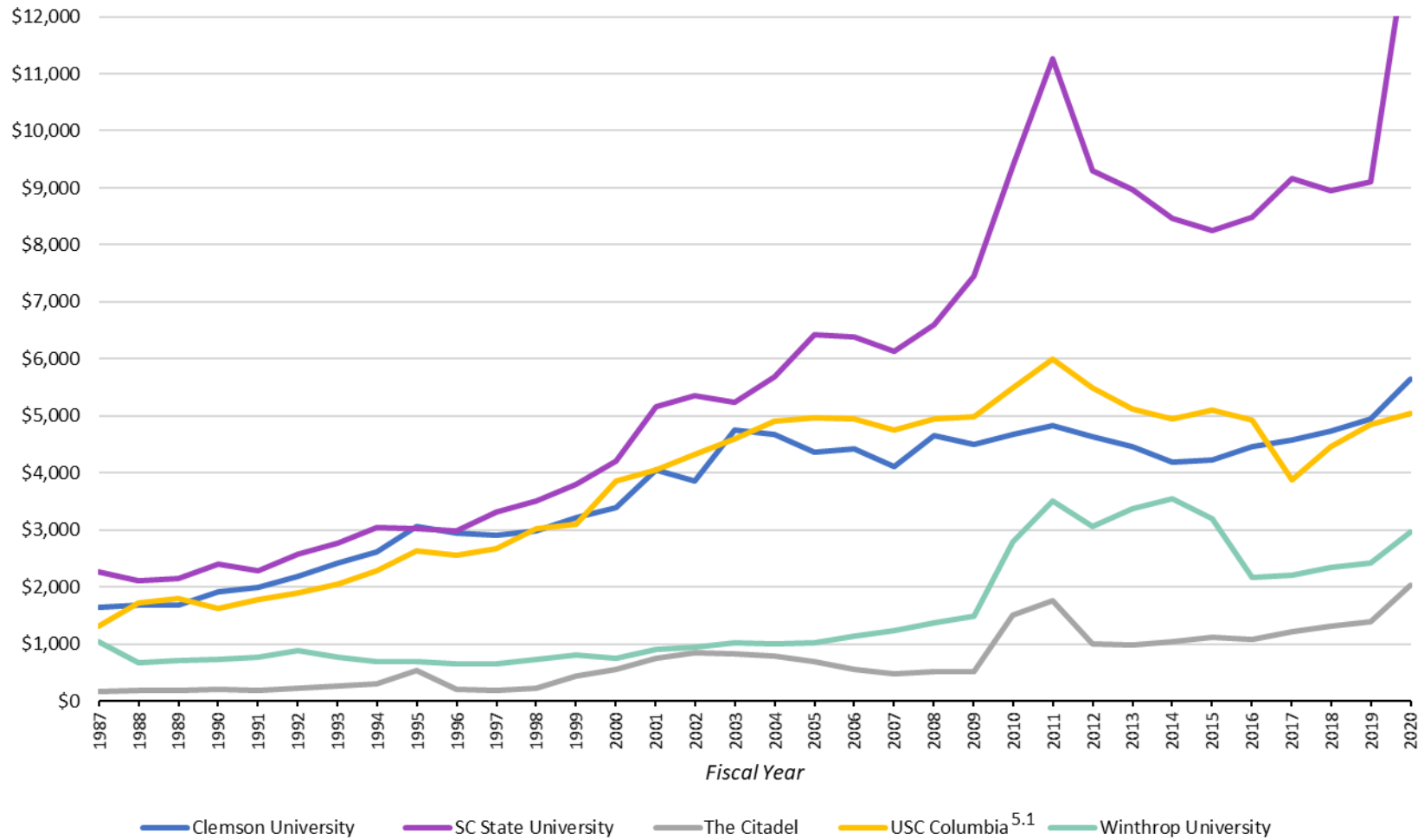
Institution	1987	2020	Percentage Change
Clemson University ³²	\$4,944.92	\$3,788.73	-23.38%
SC State University ³³	\$4,848.51	\$6,809.49	40.44%
The Citadel	\$4,329.85	\$3,318.83	-23.35%
USC Columbia	\$6,423.49	\$4,525.07	-29.55%
Winthrop University	\$3,702.56	\$3,839.59	3.70%

The total federal funds per student for Clemson University, SC State University, The Citadel, USC Columbia, and Winthrop University grew progressively dissimilar between the 1987 and 2020 fiscal years. The largest range in the amount of total federal funds per student between institutions was \$11,600.45, occurring in FY 2020. The smallest range in the amount of state appropriations per student between institutions was \$1,934.54, which occurred in FY 1988. The amount of total federal funds per student in FY 2020 for was the largest for Clemson, SC State, and The Citadel in this period. The amount of total federal funds per student peaked for USC Columbia in FY 2011 and for Winthrop University in FY 2014. All institutions in Figure 5 experienced an overall increase in the amount of total federal funds per FTE enrollment during the fiscal years reported.

³² The Clemson University data shown are the total state appropriations reported to Clemson University for educational and general activities.

³³ The SC State University data shown are the total state appropriations reported to SC State University for educational and general activities

Figure 5: Total Federal Funds per Student, FY 1987 - 2020
 Four Year Public Institutions Since 1896

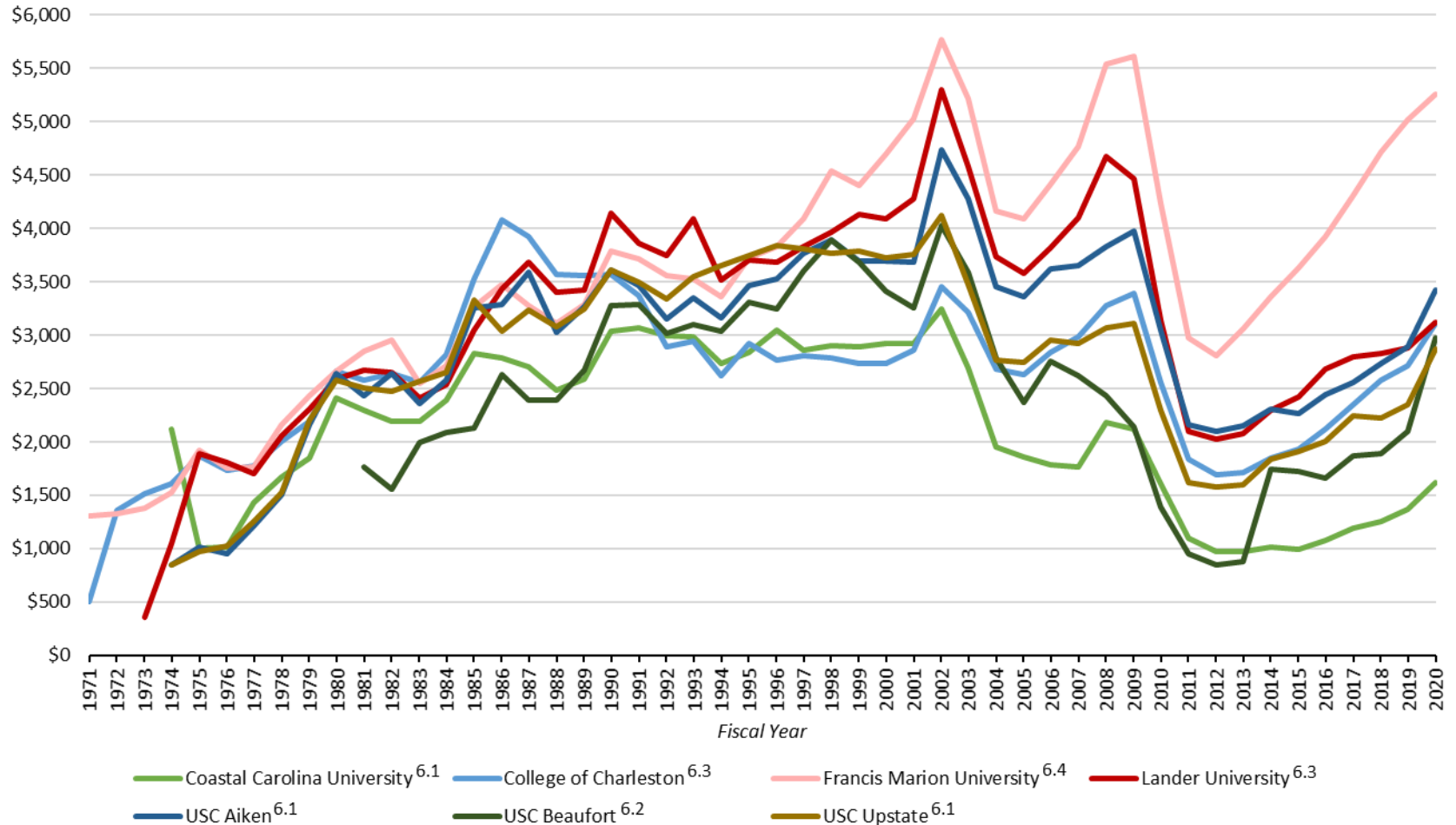


^{5.1}Data for USC Columbia includes the Columbia medical school and, starting in FY 2013, the Greenville medical school.

Institution	1987	2020	Percentage Change
Clemson University	\$1,646.40	\$5,645.33	242.89%
SC State University	\$2,257.38	\$13,630.35	503.81%
The Citadel	\$172.50	\$2,029.90	1076.79%
USC Columbia	\$1,310.36	\$5,051.70	285.52%
Winthrop University	\$1,036.13	\$2,958.82	185.57%

Figure 6 shows the state general fund appropriations for four year institutions that began receiving state funds in the 1970s. State general fund appropriations per student for Coastal Carolina University, College of Charleston, Francis Marion University, Lander University, USC Aiken, USC Beaufort, and USC Upstate were more similar between FY 1974 and FY 1997 than they were afterwards. The largest range in the amount of state general fund appropriations per student between institutions was \$3,643.01, which occurred in FY 2019. The smallest range in the amount of state general fund appropriations per student between institutions was \$255.46, which occurred in FY 1980. The amount of state general fund appropriations per student was highest for the College of Charleston in FY 1986, however, the peak for all of the other institutions in Figure 6 was FY 2002. State general fund appropriations per student for all institutions in Figure 6 showed a sharp decline following the 2001 and 2008 recessions followed by periods of growth except for Coastal Carolina University and USC Beaufort which did not experience much recovery between recessions. All institutions in Figure 6, except for Coastal Carolina University, experienced an overall increase in the amount of state general fund appropriations per student during the fiscal years reported.

Figure 6: State General Fund Appropriations per Student, FY 1971 - 2020
Public Four-Year Institutions



^{6.1} Data for Coastal Carolina University, USC Aiken, and USC Upstate are reported under the aggregate total for USC regional campuses prior to the 1974 fiscal year. See Appendix Table 18 for the USC regional campus data.
^{6.2} USC Beaufort became a four-year institution in 2004. Data for USC Beaufort are reported under the aggregate total for USC regional campuses prior to the 1981 fiscal year. See Appendix Table 18 for the USC regional campus data.
^{6.3} College of Charleston did not receive state support prior to the 1971 fiscal year. Lander University did not receive state support prior to the 1973 fiscal year.
^{6.4} Francis Marion University was a regional campus of USC prior to FY 1971.

Institution	1971	2020	Percentage Change
Coastal Carolina University ³⁴	\$2,121.12	\$1,614.80	-23.87%
College of Charleston ³⁵	\$505.03	\$3,112.84	516.37%
Francis Marion University ³⁶	\$1,311.69	\$5,254.91	300.62%
Lander University ³⁵	\$363.64	\$3,115.60	756.79%
USC Aiken ³⁴	\$847.78	\$3,417.36	303.10%
USC Beaufort ³⁷	\$1,765.92	\$2,975.62	68.50%
USC Upstate ³⁴	\$850.16	\$2,873.79	238.03%

The total federal funds per student for Coastal Carolina University, College of Charleston, Francis Marion University, Lander University, USC Aiken, USC Beaufort, and USC Upstate were more similar between FY 1987 and FY 2009 than they were afterwards. The largest range in total federal funds per student between institutions was \$2,326.54, which occurred in FY 2011. The smallest range in total federal funds per student between institutions was \$229.06, which occurred in FY 1988. The total federal funds per student peaked for all of the institutions in Figure 7 in FY 2020. Total federal funds per student for all institutions in Figure 7 showed a sharp increase following the 2008 recession and again between FY 2019 and FY 2020. All institutions in Figure 7 experienced an overall increase in the amount of total federal funds per student during the fiscal years reported.

Institution	1987	2020	Percentage Change
Coastal Carolina University	\$403.18	\$2,972.35	637.22%
College of Charleston	\$407.46	\$2,364.14	480.22%
Francis Marion University	\$362.95	\$4,644.54	1179.67%
Lander University	\$552.55	\$3,530.72	538.99%
USC Aiken	\$667.11	\$3,742.56	461.01%
USC Beaufort	\$337.29	\$2,865.86	749.68%
USC Upstate	\$548.55	\$3,405.62	520.84%

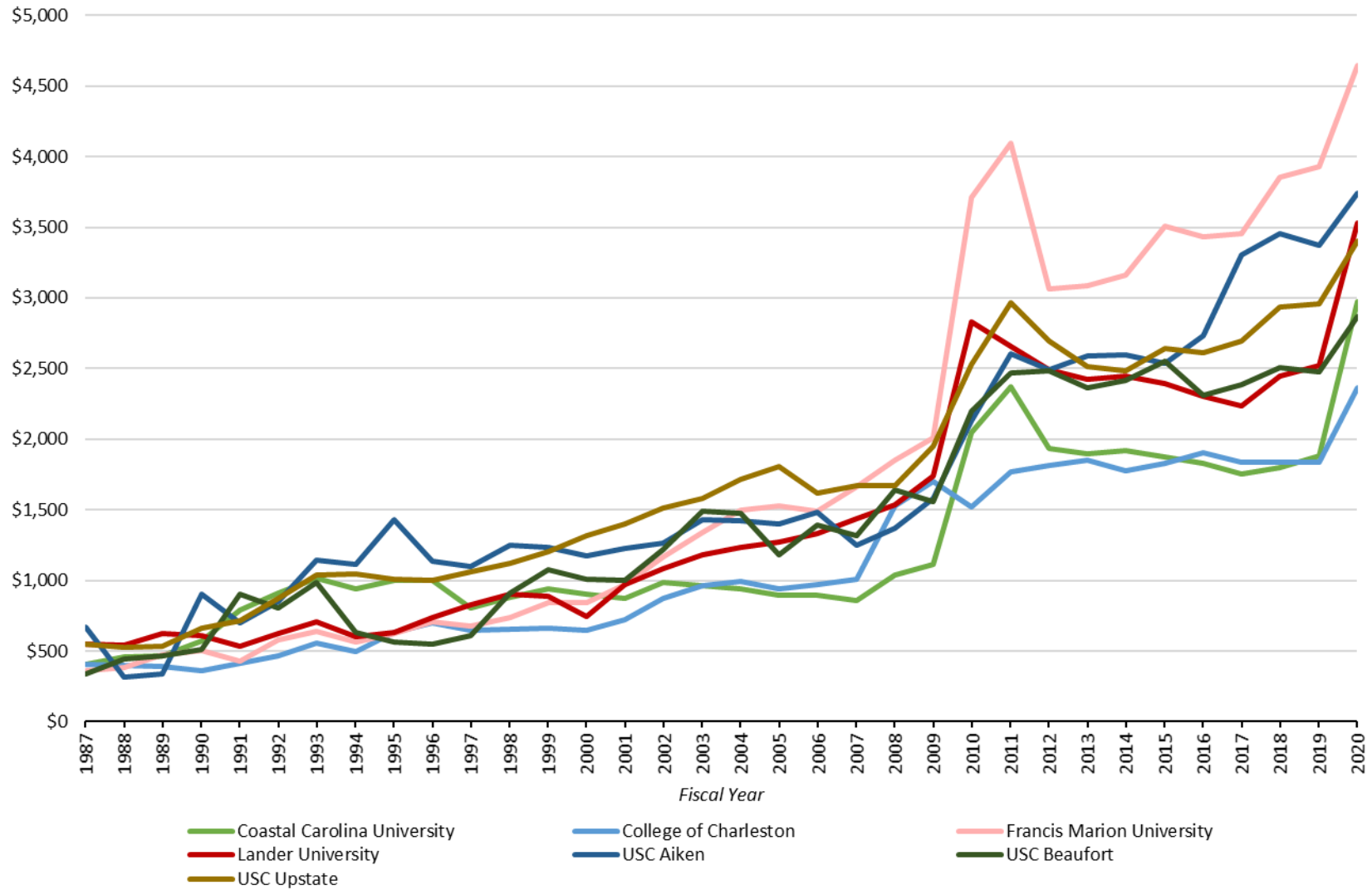
³⁴ Data for Coastal Carolina University, USC Aiken, and USC Upstate are reported under the aggregate total for USC regional campuses prior to the 1974 fiscal year. See Appendix Table 18 for the USC regional campus data.

³⁵ College of Charleston did not receive state support prior to the 1971 fiscal year. Lander University did not receive state support prior to the 1973 fiscal year.

³⁶ Francis Marion University was a regional campus of USC prior to FY 1971.

³⁷ USC Beaufort became a four-year institution in 2004. Data for USC Beaufort are reported under the aggregate total for USC regional campuses prior to the 1981 fiscal year. See Appendix Table 18 for the USC regional campus data.

Figure 7: Total Federal Funds per Student, FY 1987 - 2020
Public Four-Year Institutions



Public Two-Year Institutions

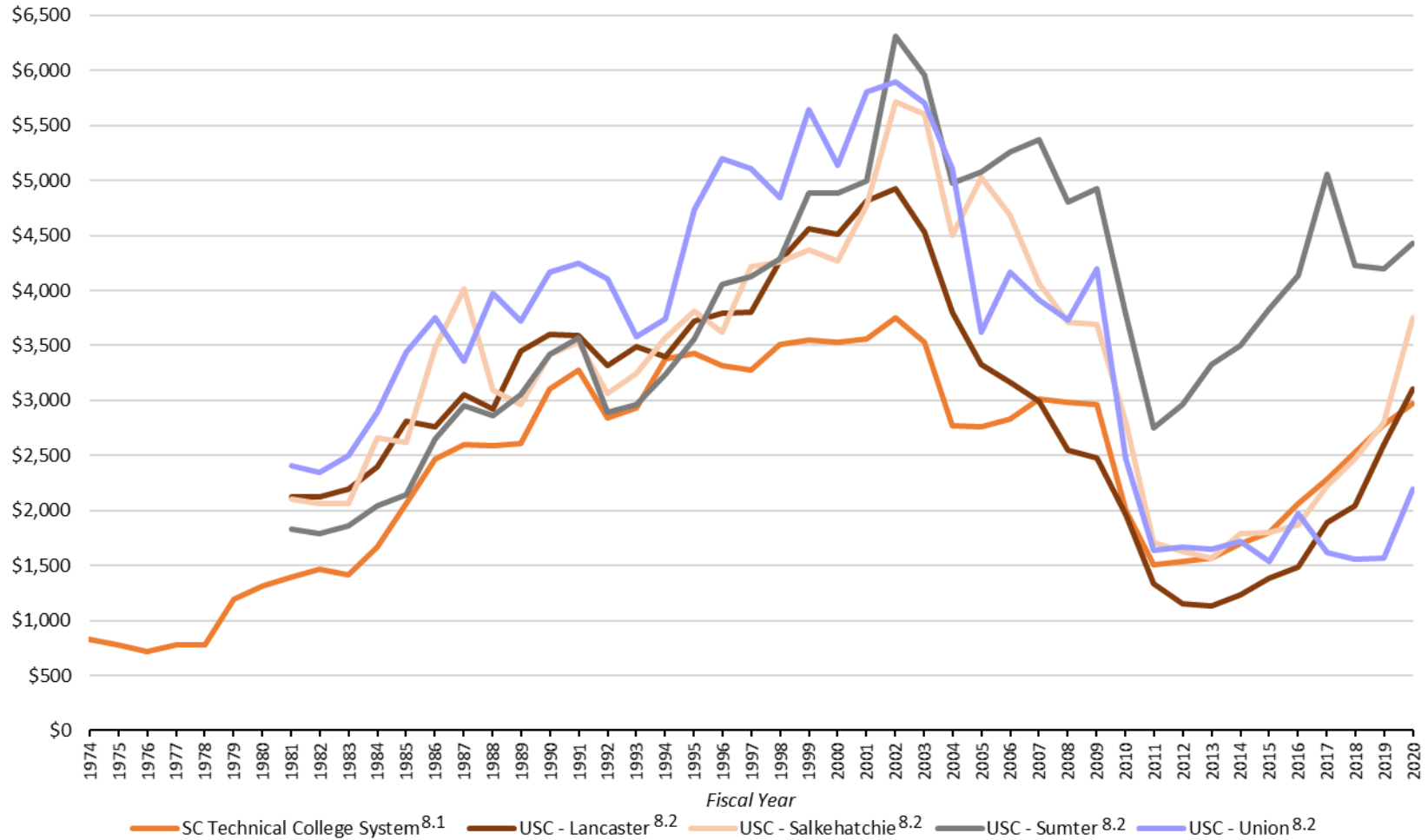
In general, the sixteen colleges comprising the South Carolina Technical College System, USC–Lancaster, USC–Salkehatchie, USC–Sumter, and USC–Union experienced steady growth in state general fund appropriations per student between FY 1981 and FY 2002. The largest range in the amount of state general fund appropriations per student enrollment between institutions was \$3,434.26, which occurred in FY 2017. The smallest range in the amount of state general fund appropriations per student enrollment between institutions was \$513.02 in FY 1994. The amount of state general fund appropriations per student enrollment peaked for all of the institutions in Figure 8 during FY 2002. State general fund appropriations per student enrollment for all institutions in Figure 8 shows a decline following the 2001 recession which persists to a sharper decline following the 2008 recessions. All two-year institutions except USC–Union experienced steady growth in amount of state general fund appropriations per student following the 2008 recession. All institutions in Figure 8, except for USC-Union, experienced an overall increase in the amount of state general fund appropriations per student between FY 1974 and FY 2020.

Institution	1974	2020	Percentage Change
SC Technical College System ³⁸	\$826.54	\$2,978.44	260.35%
USC-Lancaster ³⁹	\$2,125.33	\$3,100.36	45.88%
USC-Salkehatchie ³⁹	\$2,103.82	\$3,750.96	78.29%
USC-Sumter ³⁹	\$1,825.99	\$4,432.50	142.75%
USC-Union ³⁹	\$2,402.24	\$2,196.40	-8.57%

³⁸ The General Appropriations Bill allocates funding to the State Board for Technical and Comprehensive Education rather than the individual technical colleges. The state general fund appropriations per FTE student shown are calculate only from the amount of total

³⁹ Data for USC – Lancaster, USC – Salkehatchie, USC – Sumter, and USC - Union are reported as the aggregate total for USC regional campuses prior to the 1974 fiscal year.

Figure 8: State General Fund Appropriations per Student, FY 1974 - 2020
Public Two-Year Institutions



^{8.1} The General Appropriations Bill allocates funding to the State Board for Technical and Comprehensive Education rather than the individual technical colleges. The State Appropriations per student shown in Figure 7 are calculate only from the amount of total funding allocated to instructional programs at the technical colleges. See Appendix Table 12.

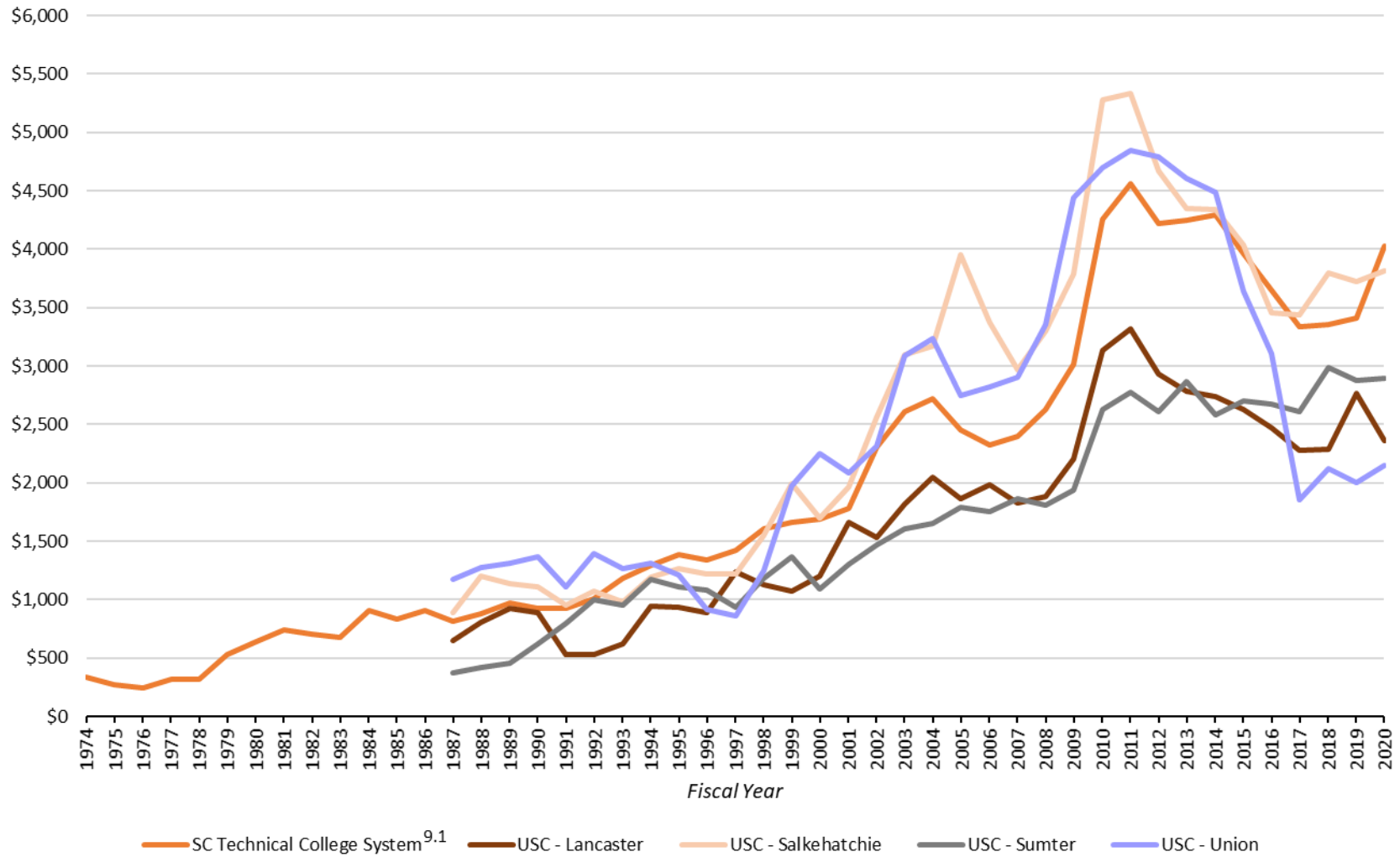
^{8.2} Data for USC – Lancaster, USC – Salkehatchie, USC – Sumter, and USC - Union are reported as the aggregate total for USC regional campuses prior to the 1974 fiscal year. See appendix Table 18 for the USC regional campus data.

The total federal funds per student for the South Carolina Technical College System, USC–Lancaster, USC–Salkehatchie, USC–Sumter, and USC-Union were more similar between FY 1987 and FY 2001 than they were afterwards. The largest range in the amount of total federal funds per student between institutions was \$2,645.74, which occurred in FY 2010. The smallest range in the amount of state appropriations per student between institutions was \$371.17, which occurred in FY 1994. The amount of total federal funds per student peaked for USC–Sumter in FY 2018, and for the all the remaining institutions in Figure 9 in FY 2011. All institutions in Figure 9 experienced an overall increase in the amount of total federal funds per FTE enrollment during the fiscal years reported.

Institution	1974	2020	Percentage Change
SC Technical College System ⁴⁰	\$340.60	\$4,023.61	1081.32%
USC-Lancaster	\$652.52	\$2,357.42	261.28%
USC-Salkehatchie	\$887.46	\$3,810.46	329.37%
USC-Sumter	\$370.30	\$2,891.93	680.98%
USC-Union	\$1,173.20	\$2,148.90	83.17%

⁴⁰ Federal fund data between FY 1974 and 1986 was collected from the State Board for Technical and Comprehensive Education.

Figure 9: Total Federal Funds per Student, FY 1974 - 2020
Public Two-Year Institutions



^{9.1} Federal fund data between FY 1974 and 1986 was collected from the State Board for Technical and Comprehensive Education.

Works Cited/Consulted

- “Select Dates in Clemson's History,” <https://www.clemson.edu/about/history/notable-dates.html>
- “Winthrop University Chronology,” <https://www.winthrop.edu/aboutus/history/chronology.aspx> :
- Andrew, Rod, Jr., *Long Gray Lines: The Southern Military School Tradition, 1839-1915*. Chapel Hill: University of North Carolina Press, 2004.
- Bond, Col. O.J. *The Story of The Citadel*. Richmond, VA: Garrett and Massie, 1936; reprint, 1989 by Southern Historical Press, Greenville, South Carolina.
- Brown, Jane McCutchen. “Medical University of South Carolina,” *South Carolina Encyclopedia*. Available: <https://www.scencyclopedia.org/sce/entries/medical-university-of-south-carolina/>
- Crowson, E. Thomas. *The Winthrop Story, 1886-1960*. Baltimore: Gateway Press, 1987.
- Green, Edwin L. *A History of the University of South Carolina*. Columbia, SC: The State Company, 1916.
- Grose, Philip G., *South Carolina at the Brink: Robert McNair and the Politics of Civil Rights*. Columbia: University of South Carolina Press, 2006.
- Gumport, Patricia J. *et al.* “Trends in United States Higher Education from Massification to Post Massification.” National Center for Postsecondary Improvement. Stanford University, Stanford, California. Available: https://web.stanford.edu/group/ncpi/documents/pdfs/1-04_massification.pdf
- Hine, William C. Hine, “South Carolina State University” in *South Carolina Encyclopedia*. Available: <https://www.scencyclopedia.org/sce/entries/south-carolina-state-university/>
- Hine, William C. *South Carolina State University: A Black Land-Grant College in Jim Crow America*. Columbia: University of South Carolina Press, 2018.
- Hollis, Daniel Walker. *University of South Carolina, Volume 1: South Carolina College*. Columbia: University of South Carolina Press, 1951.
- Lee, J.M. and Keys, S.W. (2013). *Land-grant but Unequal: State One-to-One Match Funding for 1890 Land-grant Universities*. (APLU Office of Access and Success publication no. 3000-PB1). Washington, DC: Association of Public and Land-grant Universities.
- Lesesne, Henry H. *A History of the University of South Carolina, 1940-2000*. Columbia: University of South Carolina Press, 2001.
- National Center for Education Statistics. *120 Years of American Education: A Statistical Portrait*. U.S. Department of Education Office of Educational Research and Improvement. 1993.
- Nichols, W. Gary. "The Citadel," in *South Carolina Encyclopedia*. Available: <https://www.scencyclopedia.org/sce/entries/the-citadel/>
- Public Higher Education in South Carolina: A Survey Report*. Nashville: Division of Surveys and Field Services, George Peabody College for Teachers. 1946.
- Rotholz, Julie. “Winthrop University,” in *South Carolina Encyclopedia*. <https://www.scencyclopedia.org/sce/entries/winthrop-university/>

The U.S. Land-Grant University System: An Overview August 29, 2019. Congressional Research Service <https://crsreports.congress.gov> R45897.

Waring, Joseph I. *A History of Medicine in South Carolina*. 3 vols. Columbia: South Carolina Medical Association, 1964–1971.

Waring, Joseph Igor, M.D. *A History of Medicine in South Carolina, 1825-1900*. Charleston: The South Carolina Medical Association, 1967.

Waring, Joseph Igor, M.D. *A History of Medicine in South Carolina, 1900-1970*. Charleston: The South Carolina Medical Association, 1971.

[Webb, Ross A. *The Torch is Passed: A History of Winthrop University*. Mansfield, Ohio: BookMasters, Inc. 2002.](#)

Appendix Table 1A: Clemson University (Education & General) ¹					
Fiscal Year	State General Fund Appropriations	Total Federal Funds ²	FTE Enrollment ³	State Appropriations per FTE Enrollment	Total Federal Funds per FTE Enrollment
2020	92,350,353.00	137,604,866	24,375	3,789	5,645
2019	85,303,811.00	117,037,461	23,657	3,606	4,947
2018	81,494,892.00	109,839,583	23,211	3,511	4,732
2017	77,291,817.00	107,705,896	23,499	3,289	4,583
2016	71,805,155.00	96,739,350	21,654	3,316	4,468
2015	67,590,604.00	88,223,824	20,849	3,242	4,232
2014	65,682,592.00	85,539,867	20,462	3,210	4,180
2013	59,746,916.00	88,222,844	19,800	3,018	4,456
2012	58,900,258.00	88,019,281	18,980	3,103	4,637
2011	62,013,524.00	89,076,553	18,420	3,367	4,836
2010	86,028,361.00	85,177,448	18,238	4,717	4,670
2009	109,839,823.00	78,101,404	17,367	6,325	4,497
2008	108,976,486.00	75,798,462	16,250	6,706	4,665
2007	96,890,951.00	66,869,808	16,226	5,971	4,121
2006	88,161,596.00	70,927,142	16,044	5,495	4,421
2005	84,723,685.00	69,474,309	15,948	5,312	4,356
2004	86,806,777.00	73,777,332	15,780	5,501	4,675
2003	105,107,114.00	74,178,924	15,620	6,729	4,749
2002	111,737,057.00	60,994,010	15,801	7,072	3,860
2001	94,506,056.00	65,062,357	16,053	5,887	4,053
2000	90,854,450.00	53,161,494	15,685	5,792	3,389
1999	88,989,043.00	49,106,804	15,257	5,833	3,219
1998	87,500,717.00	44,916,833	15,087	5,800	2,977
1997	84,552,211.00	43,666,684	14,978	5,645	2,915
1996	82,516,981.00	43,677,837	14,847	5,558	2,942
1995	83,219,539.00	46,417,724	15,146	5,494	3,065
1994	79,451,916.00	40,671,314	15,585	5,098	2,610
1993	84,172,954.00	40,170,999	16,543	5,088	2,428
1992	76,928,392.00	35,545,166	16,251	4,734	2,187
1991	80,862,865.00	31,267,987	15,674	5,159	1,995
1990	73,968,144.00	29,082,775	15,193	4,869	1,914
1989	66,429,609.00	24,055,213	14,251	4,661	1,688
1988	59,302,059.00	22,038,013	13,068	4,538	1,686
1987	61,139,052.00	20,356,105	12,364	4,945	1,646
1986	59,489,083.00		12,257	4,853	
1985	54,734,196.00		12,290	4,454	
1984	46,522,705.00		12,165	3,824	
1983	41,638,491.00		11,992	3,472	
1982	42,747,275.00		11,652	3,669	
1981	40,192,695.00		11,230	3,579	
1980	38,168,338.00		11,056	3,452	
1979	34,366,007.00		10,832	3,173	
1978	28,876,927.00		10,705	2,698	
1977	24,963,905.00		10,689	2,335	
1976	24,850,780.00		10,874	2,285	
1975	25,189,414.00		10,209	2,467	
1974	21,412,735.00		9,640	2,221	
1973	16,113,443.00		8,750	1,842	
1972	14,176,111.00		8,253	1,718	
1971	12,392,809.00		7,536	1,644	
1970	10,976,273.00		6,852	1,602	

¹ Appendix Table 1 contains the state appropriations allocated to Clemson University for Educational and General purposes only. See Appendix Table 19 for data on state appropriations to Clemson University for Public Service Activities.

² Total Federal funds are all of the federal funds reported by the institution to the Integrated Postsecondary Education Data System (IPEDS). Federal fund data are not available prior to FY 1987.

³ FTE enrollment data between FY 1970 and 2020 are the total Fall semester FTE enrollments reported in the Commission on Higher Education Statistical Abstracts.

Appendix Table 1B: Clemson University (Education & General) ¹					
Fiscal Year ⁴	State General Fund Appropriations ⁵	Total Federal Funds	Headcount Enrollment ⁶	State Appropriations per Headcount Enrollment	Total Federal Funds per Headcount Enrollment
1969	8,422,426.00		6,525	1,291	
1968	7,204,403.00		6,057	1,189	
1967	6,289,461.00		5,540	1,135	
1966	4,981,377.00		5,024	992	
1965	4,454,372.00		4,588	971	
1964	4,095,820.00		4,376	936	
1963	3,604,820.00		4,252	848	
1962	3,415,164.00		4,104	832	
1961	3,080,984.00		4,048	761	
1960	2,862,434.00		3,889	736	
1959	2,727,032.00		3,793	719	
1958	2,567,032.00		3,540	725	
1957	2,297,032.00		3,285	699	
1956	2,147,032.00		3,006	714	
1955	1,941,947.00		2,690	722	
1954	1,930,847.00		2,749	702	
1953	1,578,950.00		2,764	571	
1952	1,530,000.00		2,788	549	
1951	1,306,000.00		2,921	447	
1950	1,199,894.00		3,360	357	
1949	1,205,062.00		3,277	368	
1948	2,370,000.00		3,253	729	
1947	315,000.00		2,965	106	
1946	170,000.00		1,041	163	
1945	100,000.00		745	134	
1944	150,000.00		752	199	
1943	180,000.00		2,370	76	
1942	130,000.00		2,349	55	
1941	130,000.00		2,381	55	
1940	130,000.00		2,279	57	
1939	115,500.00		2,150	54	
1938	115,000.00		1,912	60	
1937	94,500.00		1,620	58	
1936	90,000.00		1,535	59	
1934	85,000.00		1,262	67	
1933	47,000.00		1,120	42	
1932	141,000.00		1,217	116	
1931	190,000.00		1,247	152	
1930	213,371.80		1,348	158	
1929	260,151.80		1,242	209	
1928	223,234.04		1,258	177	
1927	314,593.96		1,212	260	
1926	200,093.78		1,137	176	
1925	88,250.35		1,032	86	
1924	91,813.14		1,155	79	
1923	90,856.66		1,057	86	
1922	0.00		1,008	0	
1921	0.00		1,007	0	
1920	0.00		847	0	
1919	0.00		886	0	
1918	0.00		825	0	
1917	0.00		804	0	
1916	0.00		853	0	
1915	0.00		803	0	
1914	0.00		819	0	
1913	0.00		800	0	
1912	0.00		819	0	
1911	0.00		804	0	
1910	0.00		684	0	
1909	0.00		653	0	
1908	0.00		648	0	
1907	0.00		687	0	
1906	0.00		658	0	
1905	0.00		652	0	
1904	0.00		674	0	
1903	0.00		605	0	
1902	0.00		539	0	

Appendix Table 1B: Clemson University (Education & General)¹					
Fiscal Year⁴	State General Fund Appropriations⁵	Total Federal Funds	Headcount Enrollment⁶	State Appropriations per Headcount Enrollment	Total Federal Funds per Headcount Enrollment
1901	0.00		500	0	
1900	0.00		483	0	
1899	0.00		461	0	
1898	0.00		446	0	
1897	0.00		449	0	
1896	0.00		350	0	

¹ Appendix Table 1 contains the state appropriations allocated to Clemson University for Educational and General purposes only. See Appendix Table 19 for data on state appropriations to Clemson University for Public Service Activities.

⁴ The fiscal year began on January 1st and was concurrent to the calendar year prior to FY 1936. FY 1934 was 18 months long starting on January 1st 1934.

⁵ No state appropriations were reported in the General Appropriations Bill for Clemson University Education and General Activities prior to FY 1923.

⁶ Headcount enrollment data between FY 1896 and 1969 was collected from the Clemson University website and is reported as annual headcount enrollments.

Appendix Table 2A: South Carolina State University (Education & General) ⁷						
Fiscal Year	State General Fund Appropriations	Total Federal Funds ⁸	FTE Enrollment ⁹	State Appropriations per FTE Enrollment	Total Federal Funds per FTE Enrollment	
2020	15,607,355.00	31,240,772	2,292	6,809	13,630	
2019	14,456,288.00	24,053,272	2,640	5,476	9,111	
2018	13,805,229.00	23,579,497	2,636	5,237	8,945	
2017	13,225,021.00	24,282,104	2,648	4,994	9,170	
2016	12,974,014.00	23,125,654	2,728	4,756	8,477	
2015	12,585,464.00	25,076,794	3,042	4,137	8,244	
2014	12,299,345.00	26,729,448	3,160	3,892	8,459	
2013	11,378,373.00	31,117,309	3,468	3,281	8,973	
2012	11,184,786.00	37,247,038	4,008	2,791	9,293	
2011	13,012,315.00	44,995,232	3,998	3,255	11,254	
2010	18,065,137.00	38,694,977	4,122	4,383	9,387	
2009	23,056,910.00	32,509,207	4,358	5,291	7,460	
2008	22,518,133.00	30,613,311	4,644	4,849	6,592	
2007	21,040,022.00	25,162,620	4,105	5,125	6,130	
2006	20,131,809.00	26,590,440	4,164	4,835	6,386	
2005	19,583,878.00	25,535,284	3,976	4,926	6,422	
2004	20,173,230.00	22,439,591	3,949	5,108	5,682	
2003	24,393,730.00	20,569,781	3,924	6,217	5,242	
2002	25,847,273.00	20,569,781	3,845	6,722	5,350	
2001	22,408,842.00	20,682,300	4,001	5,601	5,169	
2000	21,713,101.00	17,523,471	4,156	5,225	4,216	
1999	21,238,902.00	16,366,340	4,312	4,926	3,796	
1998	20,890,839.00	14,750,785	4,205	4,968	3,508	
1997	20,083,944.00	14,489,882	4,364	4,602	3,320	
1996	20,618,670.00	13,068,949	4,373	4,715	2,989	
1995	20,367,084.00	12,861,765	4,261	4,780	3,018	
1994	18,467,671.00	13,127,720	4,322	4,273	3,037	
1993	19,448,053.00	12,936,272	4,654	4,179	2,780	
1992	18,226,888.00	12,116,177	4,710	3,870	2,572	
1991	19,230,047.00	10,516,392	4,598	4,182	2,287	
1990	19,967,012.00	9,374,674	3,909	5,108	2,398	
1989	18,129,269.00	8,589,849	3,991	4,543	2,152	
1988	17,333,702.00	7,883,677	3,729	4,648	2,114	
1987	17,420,704.00	8,110,767	3,593	4,849	2,257	
1986	19,102,894.00		3,700	5,163		
1985	17,302,036.00		3,675	4,708		
1984	14,964,386.00		3,614	4,141		
1983	13,145,766.00		3,769	3,488		
1982	12,089,290.00		3,708	3,260		
1981	11,452,057.00		3,547	3,229		
1980	11,216,474.00		3,254	3,447		
1979	9,214,240.00		3,330	2,767		
1978	8,516,518.00		3,597	2,368		
1977	7,231,764.00		3,604	2,007		
1976	7,198,097.00		3,242	2,220		
1975	5,942,866.00		2,674	2,222		
1974	5,483,540.00		2,617	2,095		
1973	5,286,156.00		2,400	2,203		
1972	4,456,805.00		2,127	2,095		
1971	4,468,981.00		1,945	2,298		
1970	3,943,830.00		1,945	2,028		

⁷ Appendix Table 2 contains the state appropriations allocated to South Carolina State University for Educational and General purposes only. See Appendix Table 20 for data on state appropriations to South Carolina State University for Public Service Activities.

⁸ Total Federal funds are all of the federal funds reported by the institution to the Integrated Postsecondary Education Data System (IPEDS). Federal fund data are not available prior to FY 1987.

⁹ FTE enrollment data between FY 1970 and 2020 are the total Fall semester FTE enrollments reported in the Commission on Higher Education Statistical Abstracts.

Appendix Table 2B: South Carolina State University (Education & General) ⁷					
Fiscal Year ¹⁰	State General Fund Appropriations	Total Federal Funds	Headcount Enrollment ¹¹	State Appropriations per Headcount Enrollment	Total Federal Funds per Headcount Enrollment
1969	3,013,351.00		2,479	1,216	
1968	2,588,690.00		2,010	1,288	
1967	2,223,839.00		2,010	1,106	
1966	1,928,366.00		2,061	936	
1965	1,885,204.00		2,133	884	
1964	1,747,263.00		2,611	669	
1963	1,677,928.00		2,336	718	
1962	1,594,461.00		2,371	672	
1961	1,527,778.14		2,389	640	
1960	1,293,032.00		2,410	537	
1959	1,299,432.00		2,589	502	
1958	1,172,000.00		1,610	728	
1957	1,130,000.00		1,926	587	
1956	1,155,000.00		1,646	702	
1955	1,025,000.00		1,342	764	
1954	1,012,390.00		2,100	482	
1953	960,000.00		2,389	402	
1952	825,000.00		2,360	350	
1951	541,500.00				
1950	586,272.00		3,963	148	
1949	566,775.00				
1948	523,000.00				
1947	195,000.00		2,396	81	
1946	130,000.00				
1945	146,500.00		1,895	77	
1944	100,000.00		1,830	55	
1943	100,000.00		2,108	47	
1942	90,000.00		1,711	53	
1941	89,997.92		1,600	56	
1940	83,125.00		1,319	63	
1939	90,000.00		1,317	68	
1938	82,500.00				
1937	72,000.00				
1936	66,000.00				
1934	54,230.20		1,600	34	
1933	74,500.00		906	82	
1932	73,000.00				
1931	96,000.00		1,490	64	
1930	106,558.30		1,431	74	
1929	118,320.43		1,691	70	
1928	124,153.77		1,623	76	
1927	126,025.00		1,537	82	
1926	115,625.00		1,124	103	
1925	106,625.00		1,122	95	
1924	101,150.00		1,003	101	
1923	98,600.00		1,096	90	
1922	70,450.00		1,205	58	
1921	63,005.21		1,241	51	
1920	115,880.00		872	133	
1919	68,209.62		900	76	
1918	63,499.79		1,089	58	
1917	37,500.00		855	44	
1916	15,000.00		711	21	
1915	15,000.00		1,311	11	
1914	15,000.00		1,152	13	
1913	12,613.78		887	14	
1912	16,500.00		875	19	
1911	19,000.00		826	23	
1910	24,284.44		584	42	
1909	12,000.00		626	19	
1908	10,000.00		651	15	
1907	7,800.00		683	11	
1906	6,300.00		600	13	
1905	7,500.00		692	11	
1904	5,000.00		815	6	
1903	5,000.00		711	7	
1902	8,500.00		665	13	

Appendix Table 2B: South Carolina State University (Education & General)⁷					
Fiscal Year¹⁰	State General Fund Appropriations	Total Federal Funds	Headcount Enrollment¹¹	State Appropriations per Headcount Enrollment	Total Federal Funds per Headcount Enrollment
1901	8,000.00		624	13	
1900	8,000.00		794	10	
1899	15,000.00		512	29	
1898	10,000.00				
1897	8,000.00		511	16	
1896	1,000.00		1,033	1	

⁷ Appendix Table 2 contains the state appropriations allocated to South Carolina State University for Educational and General purposes only. See Appendix Table 20 for data on state appropriations to South Carolina State University for Public Service Activities.

¹⁰ The fiscal year began on January 1st and was concurrent to the calendar year prior to FY 1936. FY 1934 was 18 months long starting on January 1st 1934.

¹¹ Headcount enrollment data between FY 1952 and 1969 were collected from the South Carolina Department of Education State Superintendent of Education annual reports. Enrollment data prior to FY 1952 was provided by the institution.

Appendix Table 3A: The Citadel					
Fiscal Year	State General Fund Appropriations	Total Federal Funds ¹²	FTE Enrollment ¹³	State Appropriations per FTE Enrollment	Total Federal Funds per FTE Enrollment
2020	12,100,464.00	7,401,028	3,646	3,319	2,030
2019	11,139,369.00	5,142,561	3,683	3,025	1,396
2018	10,621,834.00	4,757,967	3,608	2,944	1,319
2017	10,058,294.00	4,239,223	3,497	2,876	1,212
2016	9,470,339.00	3,778,572	3,474	2,726	1,088
2015	9,177,642.00	3,925,586	3,521	2,607	1,115
2014	8,940,908.00	3,663,629	3,534	2,530	1,037
2013	8,494,888.00	3,317,825	3,407	2,493	974
2012	8,362,933.00	3,287,996	3,263	2,563	1,008
2011	8,892,417.00	5,756,682	3,271	2,719	1,760
2010	12,347,148.00	4,838,310	3,202	3,856	1,511
2009	15,745,501.00	1,606,806	3,107	5,068	517
2008	15,285,183.00	1,558,474	3,063	4,990	509
2007	14,754,261.00	1,429,852	3,036	4,860	471
2006	14,101,406.00	1,668,071	3,031	4,652	550
2005	13,758,335.00	2,084,826	2,992	4,598	697
2004	14,170,379.00	2,422,436	3,061	4,629	791
2003	17,139,628.00	2,559,433	3,094	5,540	827
2002	18,188,194.00	2,633,094	3,089	5,888	852
2001	15,904,589.00	2,162,284	2,920	5,447	741
2000	14,733,808.00	1,611,432	2,899	5,082	556
1999	14,343,928.00	1,284,189	2,865	5,007	448
1998	14,100,360.00	623,813	2,843	4,960	219
1997	14,598,562.00	568,449	3,046	4,793	187
1996	16,321,552.00	630,265	3,053	5,346	206
1995	12,964,823.00	1,708,642	3,167	4,094	540
1994	12,318,138.00	933,695	3,178	3,876	294
1993	12,888,340.00	822,551	3,080	4,185	267
1992	12,811,509.00	657,383	3,036	4,220	217
1991	13,498,020.00	557,974	3,057	4,415	183
1990	13,440,915.00	626,449	2,995	4,488	209
1989	12,786,000.00	549,937	3,050	4,192	180
1988	11,832,827.00	507,416	2,825	4,189	180
1987	12,392,043.00	493,682	2,862	4,330	172
1986	11,999,944.00		2,815	4,263	
1985	11,484,128.00		2,762	4,158	
1984	9,840,212.00		2,817	3,493	
1983	9,023,144.00		2,948	3,061	
1982	9,097,094.00		2,867	3,173	
1981	9,190,155.00		2,832	3,245	
1980	8,136,808.00		2,777	2,930	
1979	7,201,462.00		2,830	2,545	
1978	6,791,300.00		2,882	2,356	
1977	5,839,222.00		2,801	2,085	
1976	5,749,472.00		2,833	2,029	
1975	5,241,301.00		2,570	2,039	
1974	4,878,883.00		2,668	1,829	
1973	4,402,824.00		2,640	1,668	
1972	4,040,770.00		2,670	1,513	
1971	3,789,596.00		2,519	1,504	
1970	3,454,396.00		2,492	1,386	

¹² Total Federal funds are all of the federal funds reported by the institution to the Integrated Postsecondary Education Data System (IPEDS). Federal fund data are not available prior to FY 1987.

¹³ FTE enrollment data between FY 1970 and 2020 years are the total Fall semester FTE enrollments reported in the Commission on Higher Education Statistical Abstracts.

Appendix Table 3B: The Citadel					
Fiscal Year ¹⁴	State General Fund Appropriations	Total Federal Funds	Headcount Enrollment ¹⁵	State Appropriations per Headcount Enrollment	Total Federal Funds per Headcount Enrollment
1969	2,800,164.00		2,701	1,037	
1968	2,604,735.00		2,489	1,046	
1967	2,454,669.00		2,128	1,154	
1966	1,689,189.00		2,093	807	
1965	2,010,833.00		2,001	1,005	
1964	1,830,458.00		2,001	915	
1963	1,733,258.00		2,010	862	
1962	1,672,510.00		1,986	842	
1961	1,578,150.00		2,032	777	
1960	1,535,250.00		2,057	746	
1959	1,512,750.00		2,129	711	
1958	1,478,850.00		2,369	624	
1957	1,290,850.00		2,237	577	
1956	1,188,663.00		1,977	601	
1955	1,018,663.00		1,703	598	
1954	896,019.40		1,449	618	
1953	843,200.00		1,400	602	
1952	825,000.00		1,341	615	
1951	728,000.00				
1950	776,352.00				
1949	799,178.00				
1948	1,675,000.00				
1947	150,000.00				
1946	125,000.00				
1945	101,000.00				
1944	155,000.00				
1943	205,000.00				
1942	155,000.00				
1941	150,180.56				
1940	138,812.50				
1939	141,500.00				
1938	150,000.00				
1937	136,500.00				
1936	130,000.00				
1934	121,175.00				
1933	174,000.00				
1932	175,000.00				
1931	180,000.00				
1930	206,692.14				
1929	214,199.13		671	319	
1928	201,666.41		720	280	
1927	189,720.47		722	263	
1926	315,035.18		720	438	
1925	149,759.36		438	342	
1924	161,143.56		313	515	
1923	159,821.46		312	512	
1922	150,059.86		317	473	
1921	252,315.00		297	850	
1920	398,583.00		297	1,342	
1919	169,619.63		314	540	
1918	75,860.00		350	217	
1917	44,280.00		260	170	
1916	40,500.00		227	178	
1915	38,500.00		251	153	
1914	37,600.00		240	157	
1913	34,907.00		213	164	
1912	57,266.61		229	250	
1911	55,000.00		236	233	
1910	65,000.00		256	254	
1909	37,590.00		233	161	
1908	64,017.00		229	280	
1907	35,750.00		169	212	
1906	26,750.00		176	152	
1905	26,250.00		170	154	
1904	26,250.00		149	176	
1903	27,625.00		135	205	
1902	26,250.00		127	207	

Appendix Table 3B: The Citadel					
Fiscal Year¹⁴	State General Fund Appropriations	Total Federal Funds	Headcount Enrollment¹⁵	State Appropriations per Headcount Enrollment	Total Federal Funds per Headcount Enrollment
1901	28,250.00		129	219	
1900	28,500.00		127	224	
1899	21,350.00		123	174	
1898	21,950.00				
1897	20,000.00				
1896	21,000.00		108	194	

¹⁴ The fiscal year began on January 1st and was concurrent to the calendar year prior to FY 1936. FY 1934 was 18 months long starting on January 1st 1934.

¹⁵ Headcount enrollment data between FY 1952 and 1969 and FY 1929 and 1896 were collected from the South Carolina Department of Education State Superintendent of Education annual reports. Enrollment data between FY 1930 and 1951 are unavailable.

Appendix Table 4A: University of South Carolina Columbia ¹⁶					
Fiscal Year	State General Fund Appropriations	Total Federal Funds ¹⁷	FTE Enrollment ¹⁸	State Appropriations per FTE Enrollment	Total Federal Funds per FTE Enrollment
2020	150,816,068.00	168,367,943	33,329	4,525	5,052
2019	136,900,305.00	158,631,736	32,671	4,190	4,855
2018	129,523,023.00	145,107,816	32,456	3,991	4,471
2017	122,515,574.00	122,906,932	31,691	3,866	3,878
2016	115,445,968.00	155,180,062	31,544	3,660	4,919
2015	109,451,795.00	157,539,797	30,853	3,548	5,106
2014	106,920,131.00	147,389,799	29,763	3,592	4,952
2013	99,324,550.00	147,633,375	28,781	3,451	5,130
2012	94,957,290.00	154,337,073	28,084	3,381	5,496
2011	101,531,435.00	162,876,593	27,149	3,740	5,999
2010	140,845,699.00	142,488,199	25,939	5,430	5,493
2009	178,856,406.00	125,230,546	25,077	7,132	4,994
2008	177,455,770.00	119,542,511	24,190	7,336	4,942
2007	164,524,457.00	112,758,533	23,767	6,922	4,744
2006	152,982,188.00	116,400,939	23,564	6,492	4,940
2005	147,365,809.00	112,147,777	22,557	6,533	4,972
2004	149,784,096.00	106,717,168	21,782	6,877	4,899
2003	181,267,332.00	97,926,938	21,324	8,501	4,592
2002	192,436,376.00	84,997,404	19,691	9,773	4,317
2001	163,171,264.00	79,984,857	19,724	8,273	4,055
2000	157,752,568.00	76,506,826	19,852	7,946	3,854
1999	156,103,442.00	63,905,441	20,619	7,571	3,099
1998	152,891,312.00	63,152,681	20,835	7,338	3,031
1997	146,758,821.00	54,657,373	20,380	7,201	2,682
1996	149,376,562.00	52,912,869	20,637	7,238	2,564
1995	145,678,895.00	54,214,197	20,581	7,078	2,634
1994	137,467,469.00	47,562,699	20,869	6,587	2,279
1993	142,834,044.00	43,543,920	21,167	6,748	2,057
1992	136,568,288.00	40,023,662	21,212	6,438	1,887
1991	143,482,108.00	37,014,011	20,747	6,916	1,784
1990	137,667,521.00	33,452,531	20,558	6,697	1,627
1989	128,233,420.00	36,616,268	20,284	6,322	1,805
1988	120,077,434.00	33,407,322	19,307	6,219	1,730
1987	118,166,482.00	24,105,397	18,396	6,423	1,310
1986	112,430,219.00		18,879	5,955	
1985	99,152,946.00		18,138	5,467	
1984	88,009,622.00		18,913	4,653	
1983	80,882,095.00		19,446	4,159	
1982	82,100,708.00		20,248	4,055	
1981	78,138,978.00		20,969	3,726	
1980	71,926,120.00		20,613	3,489	
1979	61,728,678.00		19,956	3,093	
1978	51,109,890.00		19,063	2,681	
1977	42,983,094.00		19,138	2,246	
1976	43,104,896.00		19,632	2,196	
1975	41,612,739.00		18,341	2,269	
1974	33,747,160.00		17,913	1,884	
1973	26,459,717.00		16,749	1,580	
1972	20,727,582.00		14,948	1,387	
1971	17,100,705.00		13,210	1,295	
1970	15,128,705.00		12,070	1,253	

¹⁶ Data for the University of South Carolina Columbia includes the data for the Medical school campuses.

¹⁷ Total Federal funds are all of the federal funds reported by the institution to the Integrated Postsecondary Education Data System (IPEDS). Federal fund data are not available prior to FY 1987.

¹⁸ FTE enrollment data between FY 1970 and 2020 are the total Fall semester FTE enrollments reported in the Commission on Higher Education Statistical Abstracts.

Appendix Table 4B: University of South Carolina Columbia					
Fiscal Year ¹⁹	State General Fund Appropriations	Total Federal Funds	Headcount Enrollment ²⁰	State Appropriations per Headcount Enrollment	Total Federal Funds per Headcount Enrollment
1969	11,610,336.00		11,932	973	
1968	9,909,013.00		11,489	862	
1967	7,999,025.00		10,353	773	
1966	6,029,613.00		9,150	659	
1965	5,158,433.00		7,837	658	
1964	4,688,705.00		6,805	689	
1963	4,036,179.76		6,699	603	
1962	3,776,843.00		6,356	594	
1961	3,492,934.36		5,661	617	
1960	3,174,050.21		5,091	623	
1959	3,029,000.00		4,907	617	
1958	2,854,000.00		4,849	589	
1957	2,529,000.00		4,906	515	
1956	2,354,000.00		4,657	505	
1955	2,108,638.00		4,317	488	
1954	2,020,430.89		3,924	515	
1953	1,640,350.00		3,533	464	
1952	1,639,155.00		3,192	514	
1951	1,500,000.00		3,690	407	
1950	1,382,274.00		4,273	323	
1949	1,386,804.00		4,790	290	
1948	2,293,500.00		5,413	424	
1947	525,000.00		5,015	105	
1946	350,000.00		2,693	130	
1945	254,000.00		1,347	189	
1944	324,000.00		1,285	252	
1943	391,133.00		1,780	220	
1942	344,000.00		1,927	179	
1941	323,117.14		2,004	161	
1940	292,375.00		2,051	143	
1939	325,000.00		1,845	176	
1938	265,000.00		1,700	156	
1937	210,000.00		1,554	135	
1936	185,000.00		1,463	126	
1934	168,450.00		1,421	119	
1933	246,600.00		1,467	168	
1932	312,000.00		1,769	176	
1931	375,000.00		1,782	210	
1930	435,175.00		1,811	240	
1929	460,880.00		1,710	270	
1928	439,872.00		1,638	269	
1927	454,594.62		1,609	283	
1926	528,903.25		1,557	340	
1925	400,065.00		1,419	282	
1924	476,025.00		1,232	386	
1923	405,353.70		1,205	336	
1922	206,203.70		746	276	
1921	243,355.00		621	392	
1920	211,515.00		610	347	
1919	136,800.00		312	438	
1918	136,300.00		201	678	
1917	123,758.15		355	349	
1916	98,564.04		578	171	
1915	104,151.44		511	204	
1914	92,931.19		551	169	
1913	137,036.21		513	267	
1912	98,298.78		443	222	
1911	74,709.44		416	180	
1910	93,583.19		339	276	
1909	84,755.74		298	284	
1908	91,709.64		278	330	
1907	64,038.93		285	225	
1906	45,819.25		301	152	
1905	40,230.00		296	136	
1904	41,730.00		214	195	
1903	31,040.00		226	137	
1902	28,107.00		215	131	

Appendix Table 4B: University of South Carolina Columbia					
Fiscal Year¹⁹	State General Fund Appropriations	Total Federal Funds	Headcount Enrollment²⁰	State Appropriations per Headcount Enrollment	Total Federal Funds per Headcount Enrollment
1901	39,107.00		227	172	
1900	27,000.00		212	127	
1899	25,000.00		184	136	
1898	25,000.00		189	132	
1897	25,000.00		162	154	
1896	25,000.00		184	136	

¹⁹ The fiscal year began on January 1st and was concurrent to the calendar year prior to FY 1936. FY 1934 was 18 months long starting on January 1st 1934.

²⁰ Headcount enrollment data between FY 1896 and 1969 was collected from the University of South Carolina website and is reported as annual headcount enrollments.

Appendix Table 5A: Winthrop University					
Fiscal Year	State General Fund Appropriations	Total Federal Funds ²¹	FTE Enrollment ²²	State Appropriations per FTE Enrollment	Total Federal Funds per FTE Enrollment
2020	19,508,974.00	15,033,771	5,081	3,840	2,959
2019	17,212,957.00	12,316,562	5,102	3,374	2,414
2018	16,150,006.00	12,475,626	5,313	3,040	2,348
2017	15,267,692.00	11,934,373	5,387	2,834	2,215
2016	14,424,851.00	11,706,879	5,378	2,682	2,177
2015	13,848,145.00	16,935,949	5,308	2,609	3,191
2014	13,480,286.00	18,826,272	5,313	2,537	3,543
2013	12,456,146.00	18,088,072	5,367	2,321	3,370
2012	12,231,202.00	15,979,348	5,223	2,342	3,059
2011	12,847,592.00	18,315,113	5,232	2,456	3,501
2010	17,838,919.00	14,978,794	5,355	3,331	2,797
2009	22,745,010.00	7,973,952	5,363	4,241	1,487
2008	21,732,096.00	7,390,418	5,360	4,054	1,379
2007	20,922,640.00	6,658,624	5,416	3,863	1,229
2006	19,928,766.00	6,226,575	5,438	3,665	1,145
2005	19,289,652.00	5,548,926	5,459	3,534	1,016
2004	19,736,734.00	5,452,010	5,454	3,619	1,000
2003	23,871,228.00	5,353,967	5,287	4,515	1,013
2002	25,296,983.00	4,770,734	5,015	5,044	951
2001	20,807,001.00	4,417,214	4,858	4,283	909
2000	20,166,488.00	3,509,668	4,680	4,309	750
1999	19,702,578.00	3,537,594	4,431	4,447	798
1998	19,359,642.00	3,186,743	4,416	4,384	722
1997	18,571,944.00	2,812,102	4,293	4,326	655
1996	18,340,059.00	2,759,322	4,293	4,272	643
1995	18,444,269.00	2,907,835	4,154	4,440	700
1994	17,540,707.00	2,935,488	4,247	4,130	691
1993	18,755,403.00	3,172,776	4,168	4,500	761
1992	18,837,542.00	3,709,049	4,221	4,463	879
1991	19,769,349.00	3,287,397	4,296	4,602	765
1990	19,504,324.00	3,339,858	4,548	4,289	734
1989	18,022,273.00	3,249,058	4,548	3,963	714
1988	16,690,130.00	2,997,842	4,460	3,742	672
1987	16,561,573.00	4,634,599	4,473	3,703	1,036
1986	16,396,872.00		4,252	3,856	
1985	15,912,558.00		4,330	3,675	
1984	13,179,188.00		4,307	3,060	
1983	11,941,089.00		4,218	2,831	
1982	11,810,015.00		4,255	2,776	
1981	11,213,779.00		4,234	2,649	
1980	9,642,733.00		4,014	2,402	
1979	8,460,128.00		3,754	2,254	
1978	7,640,308.00		3,590	2,128	
1977	6,607,339.00		3,246	2,036	
1976	6,855,607.00		3,177	2,158	
1975	6,341,662.00		2,961	2,142	
1974	5,013,691.00		2,924	1,715	
1973	4,787,572.00		3,325	1,440	
1972	4,587,961.00		3,494	1,313	
1971	4,370,314.00		3,418	1,279	
1970	3,968,400.00		3,257	1,218	

²¹ Total Federal funds are all of the federal funds reported by the institution to the Integrated Postsecondary Education Data System (IPEDS). Federal fund data are not available prior to FY 1987.

²² FTE enrollment data between FY 1970 and 2020 are the total Fall semester FTE enrollments reported in the Commission on Higher Education Statistical Abstracts.

Appendix Table 5B: Winthrop University					
Fiscal Year ²³	State General Fund Appropriations	Total Federal Funds	Headcount Enrollment ²⁴	State Appropriations per Headcount Enrollment	Total Federal Funds per Headcount Enrollment
1969	3,268,916.00		3,672	890	
1968	3,125,809.00		3,441	908	
1967	2,777,143.00		3,180	873	
1966	2,411,989.00		3,081	783	
1965	2,146,819.00		3,216	668	
1964	1,925,222.00		3,131	615	
1963	1,688,162.00		3,060	552	
1962	1,519,373.00		2,648	574	
1961	1,389,481.00		1,915	726	
1960	1,244,919.00		1,508	826	
1959	1,186,000.00		1,980	599	
1958	1,161,000.00		1,147	1,012	
1957	1,133,326.00		1,089	1,041	
1956	1,158,326.50		1,068	1,085	
1955	1,158,326.50		1,231	941	
1954	1,172,326.50		1,135	1,033	
1953	1,025,650.00		1,205	851	
1952	975,000.00				
1951	922,500.00		1,260	732	
1950	941,855.00		1,292	729	
1949	950,376.00				
1948	1,495,000.00		1,616	925	
1947	410,000.00		1,563	262	
1946	275,000.00		1,547	178	
1945	213,000.00		1,488	143	
1944	257,000.00				
1943	257,000.00				
1942	257,000.00		1,871	137	
1941	256,757.98				
1940	261,875.00		1,741	150	
1939	265,000.00		1,660	160	
1938	250,000.00		1,498	167	
1937	225,750.00		1,345	168	
1936	215,000.00		1,310	164	
1934	176,687.00		1,248	142	
1933	220,000.00		1,281	172	
1932	292,000.00		1,573	186	
1931	370,000.00		1,648	225	
1930	439,966.42		1,780	247	
1929	463,072.00		1,744	266	
1928	449,352.00		1,784	252	
1927	422,274.00		1,898	222	
1926	472,747.39		1,839	257	
1925	441,050.00		1,742	253	
1924	468,108.45		1,623	288	
1923	427,682.11		1,509	283	
1922	373,130.96		1,415	264	
1921	398,694.60		1,278	312	
1920	416,616.06		1,101	378	
1919	245,841.00		1,134.00	217	
1918	196,325.86		1,028.00	191	
1917	130,972.41		1,080.00	121	
1916	147,605.78		1,067.00	138	
1915	156,249.32		974.00	160	
1914	152,446.08		899.00	170	
1913	161,605.98		816.00	198	
1912	154,731.29		760.00	204	
1911	138,702.44		745.00	186	
1910	121,337.39		703.00	173	
1909	132,685.65		674.00	197	
1908	81,895.04		535.00	153	
1907	74,563.70		499.00	149	
1906	70,784.50		509.00	139	
1905	70,168.73		466.00	151	
1904	68,382.66		481.00	142	
1903	58,021.22		479.00	121	
1902	57,456.00		454.00	127	

Appendix Table 5B: Winthrop University					
Fiscal Year²³	State General Fund Appropriations	Total Federal Funds	Headcount Enrollment²⁴	State Appropriations per Headcount Enrollment	Total Federal Funds per Headcount Enrollment
1901	78,666.00		456.00	173	
1900	41,950.00		374.00	112	
1899	36,602.00		353.00	104	
1898	38,456.00		344.00	112	
1897	35,456.00		331.00	107	
1896	59,999.00		409.00	147	

²³ The fiscal year began on January 1st and was concurrent to the calendar year prior to FY 1936. FY 1934 was 18 months long starting on January 1st 1934.

²⁴ Headcount enrollment data between FY 1952 and 1969 academic years was collected from the South Carolina Department of Education State Superintendent of Education annual reports. Enrollment data prior to FY 1952 was provided by the institution.

Appendix Table 6: Coastal Carolina University ²⁵					
Fiscal Year	State General Fund Appropriations ²⁶	Total Federal Funds ²⁷	FTE Enrollment ²⁸	State Appropriations per FTE Enrollment	Total Federal Funds per FTE Enrollment
2020	16,009,172.00	29,467,844	9,914	1,615	2,972
2019	13,668,749.00	18,734,780	9,950	1,374	1,883
2018	12,669,990.00	18,168,423	10,113	1,253	1,797
2017	11,791,478.00	17,427,199	9,934	1,187	1,754
2016	10,522,398.00	17,884,420	9,777	1,076	1,829
2015	9,343,194.00	17,638,104	9,421	992	1,872
2014	9,016,785.00	16,995,748	8,871	1,016	1,916
2013	8,591,599.00	16,785,244	8,859	970	1,895
2012	8,478,680.00	16,897,569	8,721	972	1,938
2011	9,128,710.00	19,703,639	8,303	1,099	2,373
2010	12,675,241.00	16,072,993	7,865	1,612	2,044
2009	16,161,950.00	8,468,043	7,609	2,124	1,113
2008	15,667,571.00	7,467,366	7,177	2,183	1,040
2007	12,252,967.00	5,963,701	6,944	1,765	859
2006	11,748,195.00	5,882,140	6,576	1,787	894
2005	11,439,028.00	5,494,217	6,141	1,863	895
2004	11,327,050.00	5,433,606	5,795	1,955	938
2003	13,707,541.00	4,899,883	5,095	2,690	962
2002	14,563,574.00	4,406,925	4,487	3,246	982
2001	11,988,261.00	3,595,491	4,101	2,923	877
2000	11,640,676.00	3,616,118	3,991	2,917	906
1999	11,393,965.00	3,717,788	3,938	2,893	944
1998	11,223,391.00	3,407,138	3,874	2,897	879
1997	10,828,734.00	3,055,248	3,793	2,855	805
1996	11,129,896.00	3,662,929	3,656	3,044	1,002
1995	10,353,947.00	3,652,363	3,646	2,840	1,002
1994	9,884,645.00	3,392,569	3,610	2,738	940
1993	10,294,636.00	3,522,278	3,455	2,980	1,019
1992	10,010,513.00	3,030,037	3,340	2,997	907
1991	10,399,533.00	2,695,121	3,396	3,062	794
1990	10,005,137.00	1,883,921	3,301	3,031	571
1989	8,257,906.00	1,484,431	3,190	2,589	465
1988	7,461,205.00	1,371,861	3,005	2,483	457
1987	7,052,505.00	1,051,093	2,607	2,705	403
1986	6,546,481.00		2,353	2,782	
1985	6,073,211.00		2,148	2,827	
1984	5,012,120.00		2,093	2,395	
1983	4,624,452.00		2,113	2,189	
1982	4,398,583.00		2,003	2,196	
1981	4,261,296.00		1,859	2,292	
1980	4,173,959.00		1,733	2,409	
1979	2,874,024.00		1,553	1,851	
1978	2,266,209.00		1,359	1,668	
1977	1,773,346.00		1,241	1,429	
1976	1,348,712.00		1,328	1,016	
1975	1,146,386.00		1,147	999	
1974	2,093,544.00		987	2,121	
1973			744		
1972			559		
1971			402		
1970			338		

²⁵ Coastal Carolina University was reported as a regional campus of USC prior to FY 1994.

²⁶ State Appropriations for Coastal Carolina University prior to FY 1974 were reported under in aggregate for USC regional campuses. See Appendix Table 18.

²⁷ Total Federal funds are all of the federal funds reported by the institution to the Integrated Postsecondary Education Data System (IPEDS). Federal fund data are not available prior to FY 1987.

²⁸ FTE enrollment data between the 1970 and 2020 years are the total Fall semester FTE enrollments reported in the Commission on Higher Education Statistical Abstracts.

Appendix Table 7: College of Charleston					
Fiscal Year	State General Fund Appropriations ²⁹	Total Federal Funds ³⁰	FTE Enrollmen ³¹	State Appropriations per FTE Enrollment	Total Federal Funds per FTE Enrollment
2020	29,808,548.00	22,639,018	9,576	3,113	2,364
2019	26,696,579.00	18,114,864	9,855	2,709	1,838
2018	25,369,672.00	18,063,467	9,825	2,582	1,839
2017	24,101,091.00	18,831,242	10,257	2,350	1,836
2016	21,937,647.00	19,765,247	10,365	2,117	1,907
2015	19,957,284.00	18,972,419	10,354	1,927	1,832
2014	19,449,861.00	18,710,215	10,538	1,846	1,775
2013	18,111,904.00	19,575,378	10,559	1,715	1,854
2012	17,834,379.00	19,154,916	10,549	1,691	1,816
2011	18,764,481.00	18,048,472	10,206	1,839	1,768
2010	26,054,537.00	15,467,904	10,191	2,557	1,518
2009	33,252,307.00	16,666,935	9,806	3,391	1,700
2008	32,433,072.00	15,124,933	9,903	3,275	1,527
2007	29,283,053.00	9,903,406	9,802	2,987	1,010
2006	28,016,852.00	9,568,481	9,883	2,835	968
2005	26,175,247.00	9,358,207	9,942	2,633	941
2004	26,398,432.00	9,787,206	9,860	2,677	993
2003	31,942,230.00	9,597,169	9,947	3,211	965
2002	33,591,867.00	8,529,967	9,732	3,452	876
2001	27,036,452.00	6,853,502	9,451	2,861	725
2000	25,928,107.00	6,153,073	9,480	2,735	649
1999	25,346,924.00	6,116,787	9,270	2,734	660
1998	24,905,032.00	5,867,052	8,948	2,783	656
1997	23,957,353.00	5,491,682	8,520	2,812	645
1996	22,414,214.00	5,674,264	8,092	2,770	701
1995	23,624,897.00	5,132,583	8,092	2,920	634
1994	21,174,540.00	4,021,610	8,094	2,616	497
1993	22,138,135.00	4,158,737	7,519	2,944	553
1992	20,398,635.00	3,282,104	7,069	2,886	464
1991	21,420,904.00	2,626,469	6,361	3,368	413
1990	20,489,146.00	2,066,151	5,737	3,571	360
1989	17,885,196.00	1,958,839	5,029	3,556	390
1988	16,670,203.00	1,868,534	4,671	3,569	400
1987	17,165,565.00	1,783,025	4,376	3,923	407
1986	17,191,745.00		4,218	4,076	
1985	15,625,997.00		4,432	3,526	
1984	12,435,874.00		4,409	2,821	
1983	11,416,163.00		4,466	2,556	
1982	11,175,895.00		4,233	2,640	
1981	10,860,183.00		4,214	2,577	
1980	10,792,430.00		4,055	2,662	
1979	9,126,860.00		4,156	2,196	
1978	8,541,797.00		4,264	2,003	
1977	7,309,391.00		4,113	1,777	
1976	7,140,755.00		4,112	1,737	
1975	6,322,834.00		3,382	1,870	
1974	4,363,756.00		2,706	1,613	
1973	3,178,024.00		2,094	1,518	
1972	1,997,986.00		1,466	1,363	
1971	402,000.00		796	505	

²⁹ The College of Charleston did not receive State General Fund appropriations prior to the 1971 fiscal year.

³⁰ Total Federal funds are all of the federal funds reported by the institution to the Integrated Postsecondary Education Data System (IPEDS). Federal fund data are not available prior to FY 1987.

³¹ FTE enrollment data between FY 1971 and 2020 are the total Fall semester FTE enrollments reported in the Commission on Higher Education Statistical Abstracts.

Appendix Table 8: Francis Marion University ³²					
Fiscal Year	State General Fund Appropriations ³³	Total Federal Funds ³⁴	FTE Enrollment ³⁵	State Appropriations per FTE Enrollment	Total Federal Funds per FTE Enrollment
2020	17,950,765.00	15,865,759	3,416	5,255	4,645
2019	16,219,161.00	12,694,877	3,233	5,017	3,927
2018	15,464,921.00	12,637,752	3,279	4,716	3,854
2017	14,516,433.00	11,648,213	3,373	4,304	3,453
2016	13,488,037.00	11,812,376	3,438	3,923	3,436
2015	12,439,429.00	12,008,495	3,423	3,634	3,508
2014	11,807,813.00	11,113,266	3,516	3,358	3,161
2013	10,837,363.00	10,947,154	3,550	3,053	3,084
2012	10,167,897.00	11,110,415	3,629	2,802	3,062
2011	10,576,581.00	14,578,059	3,560	2,971	4,095
2010	14,680,433.00	12,854,757	3,465	4,237	3,710
2009	18,837,031.00	6,736,522	3,358	5,610	2,006
2008	18,382,030.00	6,155,043	3,319	5,538	1,854
2007	15,934,582.00	5,550,816	3,342	4,768	1,661
2006	14,658,681.00	4,952,801	3,321	4,414	1,491
2005	12,791,868.00	4,780,671	3,126	4,092	1,529
2004	12,760,567.00	4,583,984	3,063	4,166	1,497
2003	15,430,948.00	3,963,413	2,962	5,210	1,338
2002	16,339,236.00	3,314,417	2,834	5,765	1,170
2001	14,046,810.00	2,716,827	2,796	5,024	972
2000	13,632,991.00	2,450,526	2,906	4,691	843
1999	13,318,708.00	2,562,890	3,030	4,396	846
1998	13,090,752.00	2,130,984	2,886	4,536	738
1997	12,566,885.00	2,091,547	3,076	4,085	680
1996	12,260,960.00	2,255,389	3,200	3,832	705
1995	12,278,537.00	2,060,192	3,294	3,728	625
1994	11,586,734.00	1,943,426	3,448	3,360	564
1993	12,121,616.00	2,188,128	3,434	3,530	637
1992	11,924,011.00	1,940,473	3,354	3,555	579
1991	12,406,656.00	1,419,158	3,338	3,717	425
1990	12,531,605.00	1,671,915	3,313	3,783	505
1989	10,672,531.00	1,547,658	3,243	3,291	477
1988	9,566,301.00	1,191,588	3,082	3,104	387
1987	9,514,103.00	1,053,279	2,902	3,278	363
1986	9,340,141.00		2,693	3,468	
1985	8,377,924.00		2,566	3,265	
1984	6,617,978.00		2,440	2,712	
1983	5,825,250.00		2,292	2,542	
1982	6,232,860.00		2,108	2,957	
1981	6,180,182.00		2,167	2,852	
1980	5,463,820.00		2,051	2,664	
1979	4,774,859.00		1,965	2,430	
1978	4,219,010.00		1,957	2,156	
1977	3,624,295.00		2,056	1,763	
1976	3,543,988.00		2,016	1,758	
1975	3,247,573.00		1,687	1,925	
1974	2,459,357.00		1,611	1,527	
1973	1,987,025.00		1,435	1,385	
1972	1,640,690.00		1,237	1,326	
1971	1,010,000.00		770	1,312	
1970			417		

³² Francis Marion University was a regional campus of USC prior to FY 1971.

³³ State Appropriations for Francis Marion University prior to FY 1971 were reported in aggregate for USC regional campuses. See Appendix Table 18.

³⁴ Total Federal funds are all of the federal funds reported by the institution to the Integrated Postsecondary Education Data System (IPEDS). Federal fund data are not available prior to FY 1987.

³⁵ FTE enrollment data between FY 1970 and 2020 are the total Fall semester FTE enrollments reported in the Commission on Higher Education Statistical Abstracts.

Appendix Table 9: Lander University					
Fiscal Year	State General Fund Appropriations ³⁶	Total Federal Funds ³⁷	FTE Enrollment ³⁸	State Appropriations per FTE Enrollment	Total Federal Funds per FTE Enrollment
2020	9,649,016.00	10,934,638	3,097	3,116	3,531
2019	8,304,450.00	7,270,760	2,886	2,877	2,519
2018	7,794,074.00	6,744,094	2,758	2,826	2,445
2017	7,389,072.00	5,907,507	2,643	2,796	2,235
2016	6,837,767.00	5,882,980	2,552	2,679	2,305
2015	6,342,828.00	6,265,183	2,616	2,425	2,395
2014	6,153,545.00	6,549,387	2,681	2,295	2,443
2013	5,856,128.00	6,834,308	2,817	2,079	2,426
2012	5,763,274.00	7,100,494	2,850	2,022	2,491
2011	5,997,870.00	7,583,527	2,852	2,103	2,659
2010	8,310,088.00	7,492,609	2,647	3,139	2,831
2009	10,598,932.00	4,126,413	2,377	4,459	1,736
2008	10,175,198.00	3,349,879	2,177	4,674	1,539
2007	9,825,866.00	3,452,074	2,400	4,094	1,438
2006	9,271,031.00	3,233,547	2,427	3,820	1,332
2005	9,019,296.00	3,217,450	2,524	3,573	1,275
2004	9,168,173.00	3,030,965	2,455	3,734	1,235
2003	11,092,993.00	2,855,601	2,422	4,580	1,179
2002	11,785,815.00	2,418,659	2,226	5,295	1,087
2001	9,448,435.00	2,144,093	2,211	4,273	970
2000	9,169,057.00	1,677,260	2,242	4,090	748
1999	8,966,415.00	1,932,027	2,173	4,126	889
1998	8,816,073.00	2,007,177	2,227	3,959	901
1997	8,478,747.00	1,834,482	2,217	3,824	827
1996	8,039,782.00	1,606,459	2,182	3,685	736
1995	8,050,720.00	1,368,435	2,172	3,707	630
1994	7,636,328.00	1,310,177	2,171	3,517	603
1993	8,044,623.00	1,396,424	1,966	4,092	710
1992	7,819,536.00	1,305,657	2,090	3,741	625
1991	8,255,899.00	1,145,748	2,140	3,858	535
1990	8,293,945.00	1,224,003	2,001	4,145	612
1989	7,113,932.00	1,292,948	2,077	3,425	623
1988	6,781,752.00	1,088,276	1,996	3,398	545
1987	7,175,063.00	1,077,465	1,950	3,680	553
1986	6,834,961.00		1,992	3,431	
1985	6,045,403.00		1,982	3,050	
1984	4,752,592.00		1,877	2,532	
1983	4,216,698.00		1,750	2,410	
1982	4,168,692.00		1,574	2,648	
1981	4,021,562.00		1,507	2,669	
1980	3,852,741.00		1,486	2,593	
1979	3,344,450.00		1,450	2,307	
1978	3,103,988.00		1,513	2,052	
1977	2,632,802.00		1,550	1,699	
1976	2,611,773.00		1,444	1,809	
1975	2,243,490.00		1,187	1,890	
1974	948,442.00		905	1,048	
1973	300,000.00		825	364	

³⁶ Lander University did not receive State General Fund appropriations prior to FY 1973.

³⁷ Total Federal funds are all of the federal funds reported by the institution to the Integrated Postsecondary Education Data System (IPEDS). Federal fund data are not available prior to FY 1987.

³⁸ FTE enrollment data between FY 1973 and 2020 are the total Fall semester FTE enrollments reported in the Commission on Higher Education Statistical Abstracts.

Appendix Table 10: USC Aiken					
Fiscal Year	State General Fund Appropriations ³⁹	Total Federal Funds ⁴⁰	FTE Enrollment ⁴¹	State Appropriations per FTE Enrollment	Total Federal Funds per FTE Enrollment
2020	10,187,154.00	11,156,564	2,981	3,417	3,743
2019	8,766,454.00	10,226,390	3,034	2,889	3,371
2018	8,170,735.00	10,341,643	2,990	2,733	3,459
2017	7,732,805.00	10,011,181	3,029	2,553	3,305
2016	7,275,940.00	8,151,370	2,985	2,438	2,731
2015	6,662,802.00	7,446,106	2,938	2,268	2,534
2014	6,482,281.00	7,304,585	2,810	2,307	2,599
2013	5,924,243.00	7,128,015	2,749	2,155	2,593
2012	5,834,966.00	6,945,154	2,787	2,094	2,492
2011	6,140,203.00	7,379,262	2,835	2,166	2,603
2010	8,513,797.00	5,954,721	2,797	3,044	2,129
2009	10,838,939.00	4,314,956	2,730	3,970	1,581
2008	10,381,262.00	3,715,529	2,711	3,829	1,371
2007	10,021,979.00	3,426,253	2,749	3,646	1,246
2006	9,578,918.00	3,922,307	2,648	3,617	1,481
2005	9,278,360.00	3,855,709	2,761	3,361	1,396
2004	9,444,015.00	3,888,612	2,737	3,450	1,421
2003	11,430,591.00	3,824,709	2,676	4,272	1,429
2002	12,157,875.00	3,239,723	2,569	4,733	1,261
2001	9,561,049.00	3,182,585	2,596	3,683	1,226
2000	9,281,895.00	2,946,824	2,515	3,691	1,172
1999	9,080,542.00	3,033,049	2,461	3,690	1,232
1998	8,947,058.00	2,867,616	2,297	3,895	1,248
1997	8,618,509.00	2,518,462	2,292	3,760	1,099
1996	7,944,407.00	2,556,940	2,255	3,523	1,134
1995	7,927,150.00	3,270,940	2,290	3,462	1,428
1994	7,518,124.00	2,651,649	2,376	3,164	1,116
1993	7,826,681.00	2,680,459	2,340	3,345	1,145
1992	7,222,765.00	1,944,419	2,289	3,155	849
1991	7,597,279.00	1,533,460	2,193	3,464	699
1990	7,099,725.00	1,777,516	1,969	3,606	903
1989	5,738,739.00	597,319	1,756	3,268	340
1988	5,289,915.00	552,022	1,746	3,030	316
1987	5,497,389.00	1,021,352	1,531	3,591	667
1986	4,973,560.00		1,512	3,289	
1985	4,660,967.00		1,433	3,253	
1984	3,709,700.00		1,437	2,582	
1983	3,396,808.00		1,438	2,362	
1982	3,497,018.00		1,326	2,637	
1981	3,455,505.00		1,419	2,435	
1980	3,462,008.00		1,311	2,641	
1979	2,706,877.00		1,250	2,166	
1978	1,819,136.00		1,211	1,502	
1977	1,375,415.00		1,135	1,212	
1976	1,018,160.00		1,066	955	
1975	889,598.00		874	1,018	
1974	610,398.00		720	848	
1973			684		
1972			639		
1971			404		
1970			284		

³⁹ State Appropriations for USC Aiken prior to FY 1974 were reported in aggregate for USC regional campuses. See Appendix Table 18.

⁴⁰ Total Federal funds are all of the federal funds reported by the institution to the Integrated Postsecondary Education Data System (IPEDS). Federal fund data are not available prior to FY 1987.

⁴¹ FTE enrollment data between FY 1970 and 2020 are the total Fall semester FTE enrollments reported in the Commission on Higher Education Statistical Abstracts.

Appendix 11: USC Beaufort					
Fiscal Year	State General Fund Appropriation ⁴²	Total Federal Funds ⁴³	FTE Enrollment ⁴⁴	State Appropriations per FTE Enrollment	Total Federal Funds per FTE Enrollment
2020	5,748,894.00	5,536,851	1,932	2,976	2,866
2019	4,079,917.00	4,824,799	1,946	2,097	2,479
2018	3,634,081.00	4,822,250	1,923	1,890	2,508
2017	3,431,306.00	4,382,718	1,834	1,871	2,390
2016	3,017,775.00	4,189,864	1,814	1,664	2,310
2015	2,769,671.00	4,095,962	1,603	1,728	2,555
2014	2,627,614.00	3,648,079	1,510	1,740	2,416
2013	1,360,802.00	3,654,257	1,548	879	2,361
2012	1,344,714.00	3,956,622	1,593	844	2,484
2011	1,449,052.00	3,753,879	1,519	954	2,471
2010	2,012,013.00	3,169,607	1,444	1,393	2,195
2009	2,557,839.00	1,856,408	1,193	2,144	1,556
2008	2,677,047.00	1,808,650	1,101	2,431	1,643
2007	2,609,487.00	1,315,717	997	2,617	1,320
2006	2,526,215.00	1,278,532	916	2,758	1,396
2005	1,969,150.00	981,658	832	2,367	1,180
2004	2,015,868.00	1,068,482	723	2,788	1,478
2003	2,441,807.00	1,011,731	680	3,591	1,488
2002	2,614,823.00	790,442	650	4,023	1,216
2001	2,158,235.00	665,447	664	3,250	1,002
2000	2,118,668.00	624,861	621	3,412	1,006
1999	2,089,969.00	608,333	567	3,686	1,073
1998	2,041,398.00	476,744	525	3,888	908
1997	1,988,922.00	334,960	552	3,603	607
1996	1,825,747.00	309,216	563	3,243	549
1995	1,851,329.00	315,356	559	3,312	564
1994	1,779,180.00	372,195	587	3,031	634
1993	1,827,766.00	581,071	590	3,098	985
1992	1,692,059.00	452,642	561	3,016	807
1991	1,688,411.00	464,166	514	3,285	903
1990	1,586,768.00	249,371	485	3,272	514
1989	1,326,321.00	229,594	496	2,674	463
1988	1,133,542.00	209,902	474	2,391	443
1987	976,543.00	137,950	409	2,388	337
1986	999,980.00		380	2,632	
1985	862,771.00		405	2,130	
1984	816,743.00		392	2,084	
1983	761,863.00		383	1,989	
1982	676,563.00		434	1,559	
1981	658,687.00		373	1,766	
1980	557,516.00				

⁴² State Appropriations for USC Beaufort prior to FY 1980 were reported in aggregate for USC regional campuses. See Appendix Table 18.

⁴³ Total Federal funds are all of the federal funds reported by the institution to the Integrated Postsecondary Education Data System (IPEDS). Federal fund data are not available prior to FY 1987.

⁴⁴ FTE enrollment data between FY 1981 and 2020 are the total Fall semester FTE enrollments reported in the Commission on Higher Education Statistical Abstracts. Enrollments prior to FY 1981 are reported in aggregate for USC branch campuses. See Appendix Table 18.

Appendix Table 12: USC Upstate ⁴⁵					
Fiscal Year	State General Fund Appropriations ⁴⁶	Total Federal Funds ⁴⁷	FTE Enrollment ⁴⁸	State Appropriations per FTE Enrollment	Total Federal Funds per FTE Enrollment
2020	15,044,283.00	17,828,400	5,235	2,874	3,406
2019	12,334,806.00	15,536,932	5,247	2,351	2,961
2018	11,289,563.00	14,916,992	5,080	2,222	2,936
2017	10,692,157.00	12,843,520	4,763	2,245	2,697
2016	10,120,990.00	13,158,269	5,042	2,007	2,610
2015	9,271,989.00	12,826,166	4,850	1,912	2,645
2014	9,048,319.00	12,228,144	4,930	1,835	2,480
2013	7,799,843.00	12,272,025	4,883	1,597	2,513
2012	7,688,756.00	13,170,865	4,885	1,574	2,696
2011	8,009,507.00	14,670,894	4,947	1,619	2,966
2010	11,087,479.00	12,248,284	4,839	2,291	2,531
2009	14,118,556.00	8,864,803	4,546	3,106	1,950
2008	13,629,938.00	7,442,851	4,451	3,062	1,672
2007	12,283,834.00	7,005,937	4,199	2,925	1,668
2006	11,775,082.00	6,471,187	3,991	2,950	1,621
2005	10,429,143.00	6,866,073	3,794	2,749	1,810
2004	10,642,405.00	6,604,779	3,852	2,763	1,715
2003	12,879,727.00	5,857,569	3,703	3,478	1,582
2002	13,681,098.00	5,032,158	3,320	4,121	1,516
2001	11,311,488.00	4,213,542	3,012	3,755	1,399
2000	10,976,094.00	3,871,658	2,947	3,724	1,314
1999	10,736,124.00	3,418,196	2,837	3,784	1,205
1998	10,553,462.00	3,138,611	2,805	3,762	1,119
1997	10,141,597.00	2,815,841	2,662	3,810	1,058
1996	9,809,796.00	2,557,194	2,558	3,835	1,000
1995	9,829,041.00	2,639,420	2,624	3,746	1,006
1994	9,319,889.00	2,677,815	2,552	3,652	1,049
1993	9,765,118.00	2,873,616	2,757	3,542	1,042
1992	9,140,374.00	2,382,384	2,740	3,336	869
1991	9,368,913.00	1,908,950	2,681	3,495	712
1990	9,247,397.00	1,698,826	2,562	3,609	663
1989	7,909,293.00	1,293,641	2,438	3,244	531
1988	7,003,402.00	1,195,539	2,274	3,080	526
1987	7,011,904.00	1,189,257	2,168	3,234	549
1986	6,378,725.00		2,099	3,039	
1985	6,160,445.00		1,849	3,332	
1984	5,225,370.00		1,972	2,650	
1983	4,806,195.00		1,869	2,572	
1982	4,748,576.00		1,918	2,476	
1981	4,735,056.00		1,891	2,504	
1980	4,533,452.00		1,756	2,582	
1979	3,719,305.00		1,689	2,202	
1978	2,489,311.00		1,627	1,530	
1977	1,950,522.00		1,551	1,258	
1976	1,474,435.00		1,436	1,027	
1975	1,052,798.00		1,078	977	
1974	649,526.00		764	850	
1973			623		
1972			559		
1971			488		
1970			393		

⁴⁵ USC Upstate was reported as USC Spartanburg prior FY 2005.

⁴⁶ State Appropriations for USC Upstate prior to FY 1974 were reported in aggregate for USC regional campuses. See Appendix Table 18.

⁴⁷ Total Federal funds are all of the federal funds reported by the institution to the Integrated Postsecondary Education Data System (IPEDS). Federal fund data are not available prior to FY 1987.

⁴⁸ FTE enrollment data between FY 1970 and 2020 are the total Fall semester FTE enrollments reported in the Commission on Higher Education Statistical Abstracts.

Appendix Table 13: South Carolina Board of Technical and Comprehensive Education (Instructional Activity at Technical Colleges) ⁴⁹					
Fiscal Year	State General Fund Appropriations ⁵⁰	Total Federal Funds ⁵¹	FTE Enrollment ⁵²	State Appropriations per FTE Enrollment	Total Federal Funds per FTE Enrollment
2020	145,068,059.00	195,973,726	48,706	2,978	4,024
2019	135,709,966.00	166,209,102	48,792	2,781	3,406
2018	131,431,876.00	174,025,455	51,896	2,533	3,353
2017	121,006,206.00	176,594,248	52,940	2,286	3,336
2016	114,045,691.00	202,340,738	55,411	2,058	3,652
2015	106,456,493.00	234,669,627	59,246	1,797	3,961
2014	105,183,521.00	265,457,634	61,893	1,699	4,289
2013	99,365,709.00	269,807,499	63,463	1,566	4,251
2012	98,514,338.00	271,297,592	64,227	1,534	4,224
2011	97,084,965.00	294,675,066	64,597	1,503	4,562
2010	124,964,358.00	266,109,286	62,504	1,999	4,257
2009	159,929,132.00	162,922,524	54,033	2,960	3,015
2008	151,787,936.00	133,703,561	50,932	2,980	2,625
2007	146,940,262.00	116,953,497	48,755	3,014	2,399
2006	137,705,082.00	112,944,514	48,572	2,835	2,325
2005	134,173,206.00	119,206,871	48,672	2,757	2,449
2004	133,728,074.00	131,334,991	48,302	2,769	2,719
2003	161,030,322.00	118,768,927	45,596	3,532	2,605
2002	154,325,308.00	95,010,555	41,151	3,750	2,309
2001	138,944,041.00	69,606,090	39,035	3,559	1,783
2000	134,762,097.00	64,593,598	38,191	3,529	1,691
1999	132,294,283.00	61,870,665	37,223	3,554	1,662
1998	127,367,326.00	58,110,169	36,254	3,513	1,603
1997	116,182,701.00	50,427,752	35,454	3,277	1,422
1996	117,546,985.00	47,243,177	35,382	3,322	1,335
1995	112,156,932.00	45,283,530	32,688	3,431	1,385
1994	113,434,473.00	43,326,156	33,581	3,378	1,290
1993	103,768,208.00	41,882,529	35,373	2,934	1,184
1992	104,758,992.00	37,039,285	36,890	2,840	1,004
1991	108,778,762.00	30,586,098	33,154	3,281	923
1990	96,466,624.00	28,599,122	31,025	3,109	922
1989	71,798,374.00	26,670,877	27,564	2,605	968
1988	66,984,493.00	22,835,652	25,879	2,588	882
1987	68,540,859.00	21,467,133	26,347	2,601	815
1986	63,941,578.00	23,557,403	25,924	2,467	909
1985	54,131,072.00	21,972,010	26,276	2,060	836
1984	47,939,456.00	25,950,728	28,667	1,672	905
1983	43,971,716.00	21,017,148	30,990	1,419	678
1982	44,101,535.00	21,365,748	30,160	1,462	708
1981	40,771,505.00	21,817,219	29,297	1,392	745
1980	36,700,708.00	17,946,647	28,011	1,310	641
1979	38,454,248.00	16,924,489	32,214	1,194	525
1978	25,918,466.00	10,530,407	33,444	775	315
1977	25,386,930.00	10,530,407	32,656	777	322
1976	25,696,322.00	8,832,718	36,010	714	245
1975	22,863,691.00	7,874,101	29,417	777	268
1974	18,025,131.00	7,427,849	21,808	827	341
1973	11,919,596.00				
1972	9,291,177.00				
1971	8,431,466.00				
1970	7,840,476.00				
1969	5,685,583.00				
1968	4,596,074.00				
1967	1,839,457.00				
1966	1,324,365.00				

⁴⁹ Appendix Table 12 contains the State General Fund appropriations allocated specifically to the State Board for Technical and Comprehensive Education for the Technical Colleges. See Appendix Table 22 for the total state appropriations to the State Board for Technical and Comprehensive Education.

⁵⁰ State Appropriations allocated to the State Board for Technical and Comprehensive Education for the Technical Colleges were not listed prior to 1966.

⁵¹ Total Federal funds are all of the federal funds reported by the institution to the Integrated Postsecondary Education Data System (IPEDS). Total Federal Funds reported between FY 1974 and 1986 are from the State Board for Technical and Comprehensive Education Annual report. Federal funds data are not available prior to FY 1974.

⁵² FTE enrollment data between FY 1970 and 2020 are the total Fall semester FTE enrollments reported in the Commission on Higher Education Statistical Abstracts. FTE Enrollments between FY 1974 and 1979 are from the State Board for Technical and Comprehensive Education Annual report.

Appendix Table 14: USC - Lancaster

Fiscal Year	State General Fund Appropriations ⁵³	Total Federal Funds ⁵⁴	FTE Enrollment ⁵⁵	State Appropriations per FTE Enrollment	Total Federal Funds per FTE Enrollment
2020	3,447,603.00	2,621,455	1,112	3,100	2,357
2019	2,755,120.00	2,928,058	1,060	2,599	2,762
2018	2,428,442.00	2,708,344	1,186	2,048	2,284
2017	2,169,835.00	2,612,487	1,145	1,895	2,282
2016	1,754,369.00	2,908,350	1,178	1,489	2,469
2015	1,606,720.00	3,052,806	1,162	1,383	2,627
2014	1,542,448.00	3,414,457	1,249	1,235	2,734
2013	1,468,791.00	3,616,192	1,299	1,131	2,784
2012	1,450,359.00	3,697,086	1,260	1,151	2,934
2011	1,528,760.00	3,787,696	1,143	1,337	3,314
2010	2,119,544.00	3,380,052	1,080	1,963	3,130
2009	2,691,501.00	2,387,771	1,085	2,481	2,201
2008	2,554,105.00	1,890,801	1,003	2,546	1,885
2007	2,470,254.00	1,503,744	824	2,998	1,825
2006	2,366,940.00	1,485,929	748	3,164	1,987
2005	2,297,067.00	1,288,817	690	3,329	1,868
2004	2,333,227.00	1,257,465	614	3,800	2,048
2003	2,825,947.00	1,135,254	623	4,536	1,822
2002	3,023,973.00	939,626	614	4,925	1,530
2001	2,631,408.00	905,163	546	4,819	1,658
2000	2,582,502.00	686,551	573	4,507	1,198
1999	2,546,973.00	599,923	558	4,564	1,075
1998	2,520,191.00	664,386	591	4,264	1,124
1997	2,451,398.00	799,841	644	3,807	1,242
1996	2,401,424.00	564,747	633	3,794	892
1995	2,442,269.00	610,622	656	3,723	931
1994	2,348,569.00	649,092	691	3,399	939
1993	2,481,076.00	441,043	711	3,490	620
1992	2,307,715.00	370,395	695	3,320	533
1991	2,440,518.00	357,346	679	3,594	526
1990	2,232,823.00	548,624	620	3,601	885
1989	2,053,200.00	550,800	596	3,445	924
1988	1,823,418.00	503,559	623	2,927	808
1987	1,758,551.00	375,200	575	3,058	653
1986	1,693,685.00		613	2,763	
1985	1,592,510.00		567	2,809	
1984	1,367,678.00		571	2,395	
1983	1,275,250.00		582	2,191	
1982	1,202,803.00		566	2,125	
1981	1,173,183.00		552	2,125	
1980	903,265.00				

⁵³ State Appropriations for USC - Lancaster prior to FY 1980 were reported in aggregate for USC regional campuses. See Appendix Table 18.

⁵⁴ Total Federal funds are all of the federal funds reported by the institution to the Integrated Postsecondary Education Data System (IPEDS). Federal fund data are not available prior to FY 1987.

⁵⁵ FTE enrollment data between FY 1981 and 2020 are the total Fall semester FTE enrollments reported in the Commission on Higher Education Statistical Abstracts. Enrollments prior to FY 1981 academic year are reported in aggregate for USC regional campuses. See Appendix Table 18.

Appendix Table 15: USC - Salkehatchie					
Fiscal Year	State General Fund Appropriations ⁵⁶	Total Federal Funds ⁵⁷	FTE Enrollment ⁵⁸	State Appropriations per FTE Enrollment	Total Federal Funds per FTE Enrollment
2020	2,396,865.00	2,434,881	639	3,751	3,810
2019	1,980,821.00	2,637,957	708	2,798	3,726
2018	1,805,581.00	2,777,585	731	2,470	3,800
2017	1,671,689.00	2,580,663	750	2,229	3,441
2016	1,392,257.00	2,575,972	746	1,866	3,453
2015	1,353,979.00	3,043,753	754	1,796	4,037
2014	1,309,944.00	3,178,254	732	1,790	4,342
2013	1,251,387.00	3,463,787	796	1,572	4,351
2012	1,235,873.00	3,545,978	759	1,628	4,672
2011	1,302,879.00	4,071,094	764	1,705	5,329
2010	1,809,052.00	3,403,773	645	2,805	5,277
2009	2,305,193.00	2,362,587	624	3,694	3,786
2008	2,217,943.00	1,973,851	598	3,709	3,301
2007	2,149,911.00	1,571,341	529	4,064	2,970
2006	2,066,044.00	1,486,489	441	4,685	3,371
2005	2,008,973.00	1,579,374	400	5,022	3,948
2004	2,064,481.00	1,455,299	459	4,498	3,171
2003	2,478,651.00	1,370,065	442	5,608	3,100
2002	2,545,203.00	1,142,360	445	5,720	2,567
2001	2,119,198.00	871,132	444	4,773	1,962
2000	2,075,936.00	826,514	486	4,271	1,701
1999	2,044,056.00	934,271	468	4,368	1,996
1998	2,019,415.00	736,143	474	4,260	1,553
1997	1,962,621.00	567,496	465	4,221	1,220
1996	1,857,427.00	627,780	513	3,621	1,224
1995	1,882,009.00	624,595	494	3,810	1,264
1994	1,805,798.00	605,039	506	3,569	1,196
1993	1,878,461.00	564,551	578	3,250	977
1992	1,683,257.00	590,152	549	3,066	1,075
1991	1,730,847.00	468,650	490	3,532	956
1990	1,536,060.00	499,507	449	3,421	1,112
1989	1,240,084.00	474,211	418	2,967	1,134
1988	1,120,750.00	433,539	362	3,096	1,198
1987	1,173,603.00	259,138	292	4,019	887
1986	1,106,936.00		318	3,481	
1985	887,487.00		339	2,618	
1984	844,362.00		317	2,664	
1983	786,101.00		381	2,063	
1982	744,007.00		361	2,061	
1981	708,986.00		337	2,104	
1980	503,818.00				

⁵⁶ State Appropriations for USC - Salkehatchie prior to FY 1980 were reported in aggregate for USC regional campuses. See Appendix Table 18.

⁵⁷ Total Federal funds are all of the federal funds reported by the institution to the Integrated Postsecondary Education Data System (IPEDS). Federal fund data are not available prior to FY 1987.

⁵⁸ FTE enrollment data between FY 1981 and 2020 are the total Fall semester FTE enrollments reported in the Commission on Higher Education Statistical Abstracts. Enrollments prior to FY 1981 are reported in aggregate for USC regional campuses. See Appendix Table 18.

Appendix Table 16: USC - Sumter ⁵⁹					
Fiscal Year	State General Fund Appropriations ⁶⁰	Total Federal Funds ⁶¹	FTE Enrollment ⁶²	State Appropriations per FTE Enrollment	Total Federal Funds per FTE Enrollment
2020	3,789,789.00	2,472,602	855	4,433	2,892
2019	3,287,819.00	2,249,052	783	4,199	2,872
2018	3,103,940.00	2,189,496	734	4,229	2,983
2017	2,952,539.00	1,525,381	584	5,056	2,612
2016	2,708,684.00	1,752,667	655	4,135	2,676
2015	2,629,720.00	1,853,179	686	3,833	2,701
2014	2,528,845.00	1,864,282	723	3,498	2,579
2013	2,330,655.00	2,007,962	701	3,325	2,864
2012	2,297,158.00	2,019,349	775	2,964	2,606
2011	2,418,440.00	2,438,260	878	2,754	2,777
2010	3,358,011.00	2,336,712	888	3,782	2,631
2009	4,282,036.00	1,681,895	870	4,922	1,933
2008	4,125,896.00	1,552,169	859	4,803	1,807
2007	3,983,056.00	1,381,344	742	5,368	1,862
2006	3,806,920.00	1,266,444	724	5,258	1,749
2005	3,687,396.00	1,297,623	726	5,079	1,787
2004	3,747,817.00	1,244,082	753	4,977	1,652
2003	4,536,938.00	1,218,832	761	5,962	1,602
2002	4,831,662.00	1,125,005	766	6,308	1,469
2001	3,899,033.00	1,019,674	781	4,992	1,306
2000	3,798,053.00	849,805	777	4,888	1,094
1999	3,725,803.00	1,041,406	763	4,883	1,365
1998	3,669,269.00	1,013,977	855	4,292	1,186
1997	3,538,309.00	801,690	858	4,124	934
1996	3,461,495.00	925,603	854	4,053	1,084
1995	3,475,211.00	1,086,532	977	3,557	1,112
1994	3,309,271.00	1,200,011	1,024	3,232	1,172
1993	3,456,724.00	1,115,412	1,166	2,965	957
1992	3,174,008.00	1,099,671	1,098	2,891	1,002
1991	3,341,958.00	744,219	936	3,570	795
1990	3,169,789.00	578,910	928	3,416	624
1989	2,730,074.00	411,507	895	3,050	460
1988	2,550,388.00	376,213	892	2,859	422
1987	2,512,017.00	314,752	850	2,955	370
1986	2,356,151.00		889	2,650	
1985	1,768,739.00		824	2,147	
1984	1,754,049.00		857	2,047	
1983	1,609,384.00		867	1,856	
1982	1,564,004.00		876	1,785	
1981	1,517,397.00		831	1,826	
1980	1,389,682.00				
1979					
1978					
1977					
1976					
1975					
1974					

Appendix Table 16B: Clemson - Sumter ⁵⁹					
Fiscal Year	State General Fund Appropriations ⁶⁰	Total Federal Funds ⁶¹	Headcount Enrollment ⁶²	State Appropriations per Headcount Enrollment	Total Federal Funds per Headcount Enrollment
1973					
1972					
1971	183,740.00				
1970	147,724.00		226	654	
1969	130,930.00		193	678	
1968	116,131.00		178	652	
1967	117,250.00		113	1,038	

⁵⁹ USC - Sumter was a regional campus of Clemson University until FY 1974.

⁶⁰ State Appropriations for USC - Sumter between FY 1974 and 1980 were reported in aggregate for USC regional campuses. See Appendix Table 18.

⁶¹ Total Federal funds are all of the federal funds reported by the institution to the Integrated Postsecondary Education Data System (IPEDS). Federal fund data are not available prior to FY 1987.

⁶² FTE enrollment data between FY 1981 and 2020 are the total Fall semester FTE enrollments reported in the Commission on Higher Education Statistical Abstracts. Enrollments prior to FY 1981 are reported in aggregate for USC regional campuses. See Appendix Table 18. Headcount enrollment data between FY 1971 and 1967 are the headcount enrollments reported in the Department of Education Superintendent annual reports.

Appendix 17: USC - Union					
Fiscal Year	State General Fund Appropriations ⁶³	Total Federal Funds ⁶⁴	FTE Enrollment ⁶⁵	State Appropriations per FTE Enrollment	Total Federal Funds per FTE Enrollment
2020	1,513,320.00	1,480,589	689	2,196	2,149
2019	1,023,044.00	1,307,864	654	1,564	2,000
2018	869,844.00	1,183,240	558	1,559	2,121
2017	799,377.00	913,107	493	1,621	1,852
2016	658,186.00	1,037,814	334	1,971	3,107
2015	637,495.00	1,507,802	414	1,540	3,642
2014	600,731.00	1,570,282	350	1,716	4,487
2013	570,069.00	1,588,098	345	1,652	4,603
2012	560,614.00	1,603,845	335	1,673	4,788
2011	589,341.00	1,743,720	360	1,637	4,844
2010	818,301.00	1,558,361	332	2,465	4,694
2009	1,044,936.00	1,106,648	249	4,197	4,444
2008	992,713.00	893,385	266	3,732	3,359
2007	958,564.00	712,273	245	3,913	2,907
2006	916,406.00	619,937	220	4,165	2,818
2005	887,554.00	673,314	245	3,623	2,748
2004	914,325.00	579,586	179	5,108	3,238
2003	1,106,239.00	599,223	194	5,702	3,089
2002	1,172,850.00	461,227	199	5,894	2,318
2001	1,021,484.00	367,000	176	5,804	2,085
2000	992,534.00	434,237	193	5,143	2,250
1999	971,279.00	340,183	172	5,647	1,978
1998	955,339.00	245,385	197	4,849	1,246
1997	913,607.00	154,545	179	5,104	863
1996	982,645.00	172,323	189	5,199	912
1995	933,543.00	237,841	197	4,739	1,207
1994	887,500.00	310,594	237	3,745	1,311
1993	923,086.00	327,598	258	3,578	1,270
1992	895,532.00	304,170	218	4,108	1,395
1991	925,522.00	242,136	218	4,246	1,111
1990	807,605.00	264,673	194	4,163	1,364
1989	744,242.00	261,461	200	3,721	1,307
1988	743,333.00	239,036	187	3,975	1,278
1987	702,357.00	245,199	209	3,361	1,173
1986	833,664.00		222	3,755	
1985	633,297.00		184	3,442	
1984	570,576.00		197	2,896	
1983	527,919.00		211	2,502	
1982	532,268.00		227	2,345	
1981	523,688.00		218	2,402	
1980	373,199.00				

⁶³ State Appropriations for USC - Union prior to FY 1980 were reported in aggregate for USC regional campuses. See Appendix Table 18.

⁶⁴ Total Federal funds are all of the federal funds reported by the institution to the Integrated Postsecondary Education Data System (IPEDS). Federal fund data are not available prior to FY 1987.

⁶⁵ FTE enrollment data between FY 1981 and 2020 are the total Fall semester FTE enrollments reported in the Commission on Higher Education Statistical Abstracts. Enrollments prior to FY 1981 are reported in aggregate for USC regional campuses. See Appendix Table 18.

Appendix Table 18A: USC - Regional Campuses Combined ⁶⁶					
Fiscal Year	State General Fund Appropriations ⁶⁷	Total Federal Funds	FTE Enrollment ⁶⁸	State Appropriations per FTE Enrollment	Total Federal Funds per FTE Enrollment
1982			2,464		
1981			2,310		
1980			2,115		
1979	2,564,379.00		1,866	1,374	
1978	3,359,177.00		1,719	1,954	
1977	2,475,116.00		1,658	1,493	
1976	2,467,322.00		1,699	1,452	
1975	2,100,314.00		1,733	1,212	
1974	1,815,544.00		1,374	1,321	
1973	2,442,200.00		1,687	1,448	
1972	2,122,200.00		1,445	1,469	
1971			1,170		
1970	1,205,000.00		899	1,340	
Appendix Table 18B: USC - Regional Campuses Combined ⁶⁶					
Fiscal Year	State General Fund Appropriations ⁶⁷	Total Federal Funds	Headcount Enrollment ⁶⁸	State Appropriations per Headcount Enrollment	Total Federal Funds per Headcount Enrollment
1969	1,141,980.00		2,316	493	
1968	793,800.00		2,071	383	
1967	485,827.00		1,571	309	
1966	334,000.00		1,329	251	
1965	200,000.00		978	204	
1964	200,000.00		728	275	
1963	150,000.00		596	252	
1962			545		
1961			389		
1960			265		
1959			112		
1958			52		

⁶⁶ The institutions reported under the combined heading of USC Regional Campuses varies by year. See the Appendix Tables of individual USC regional institutions for the data on specific campuses.

⁶⁷ General appropriations for the USC regional campuses was reported as an aggregate line item between FY 1963 and 1979 . State appropriations for the USC regional campuses was not defined prior to FY 1963 .

⁶⁸ FTE enrollment data between FY 1970 and 1982 are the total Fall semester FTE enrollments reported in the Commission on Higher Education Statistical Abstracts. Headcount enrollments between FY 1960 and 1969 are the annual enrollments reported on the USC website.

Appendix Table 19: Clemson University (Public Service Activities)⁶⁹

Fiscal Year ⁷⁰	State General Fund Appropriations ⁷¹	Total Federal Funds ⁷²	FTE Enrollment ⁷³	State Appropriations per FTE Enrollment ⁷³	Total Federal Funds per FTE Enrollment ⁷³
2020	45,521,749.00				
2019	42,957,592.00				
2018	40,055,838.00				
2017	36,511,692.00				
2016	34,371,650.00				
2015	32,032,186.00				
2014	31,012,634.00				
2013	27,995,827.00				
2012	27,666,828.00				
2011	28,214,589.00				
2010	38,243,709.00				
2009	50,896,444.00				
2008	50,619,437.00				
2007	43,533,084.00				
2006	39,608,134.00				
2005	34,921,324.00				
2004	38,874,739.00				
2003	47,137,307.00				
2002	48,818,121.00				
2001	52,214,103.00				
2000	50,699,441.00				
1999	49,530,634.00				
1998	47,356,852.00				
1997	45,524,377.00				
1996	49,491,197.00				
1995	47,351,038.00				
1994	42,997,992.00				
1993	43,892,442.00				
1992	42,487,691.00				
1991	45,117,727.00				
1990	43,564,971.00				
1989	39,625,594.00				
1988	35,980,046.00				
1987	35,469,239.00				
1986	34,982,324.00				
1985	29,826,823.00				
1984	26,472,968.00				
1983	24,042,965.00				
1982	24,003,889.00				
1981	22,966,106.00				
1980	21,518,296.00				
1979	19,311,673.00				
1978	14,878,257.00				
1977	12,637,736.00				
1976	12,151,711.00				
1975	12,050,228.00				
1974	9,831,249.00				
1973	7,986,696.00				
1972	6,147,330.00				
1971	6,510,800.00				
1970	5,909,814.00				
1969	4,222,472.00				
1968	4,190,590.00				
1967	3,626,878.00				
1966	3,162,174.00				
1965	3,127,612.00				
1964	2,825,764.00				
1963	2,570,164.00				
1962	2,335,151.00				
1961	2,228,051.00				
1960	1,979,337.00				
1959	1,979,337.00				
1958	1,905,556.00				
1957	1,774,248.00				
1956	1,779,348.00				
1955	1,762,048.00				
1954	1,806,128.00				

Appendix Table 19: Clemson University (Public Service Activities) ⁶⁹					
Fiscal Year ⁷⁰	State General Fund Appropriations ⁷¹	Total Federal Funds ⁷²	FTE Enrollment ⁷³	State Appropriations per FTE Enrollment ⁷³	Total Federal Funds per FTE Enrollment ⁷³
1953	1,646,355.50				
1952	1,267,333.00				
1951	1,105,950.00				
1950	1,062,672.00				
1949	1,039,994.00				
1948	939,994.00				
1947	653,550.00				
1946	603,550.00				
1945	435,488.00				
1944	427,488.00				
1943	364,468.00				
1942	364,468.00				
1941	339,468.00				
1940	294,704.00				
1939	295,257.00				
1938	295,257.00				
1937	257,500.00				
1936	215,850.00				
1934	211,350.00				
1933	268,000.00				
1932	310,516.48				
1931	406,711.39				
1930	424,271.79				
1929	292,772.85				
1928	279,907.85				
1927	268,862.85				
1926	268,862.85				
1925	268,862.85				
1924	269,862.85				
1923	269,862.85				
1922	242,862.85				
1921	226,147.15				
1920	168,070.00				
1919	0.00				
1918	0.00				
1917	0.00				
1916	0.00				
1915	0.00				
1914	0.00				
1913	0.00				
1912	0.00				
1911	0.00				
1910	0.00				
1909	0.00				
1908	0.00				
1907	0.00				
1906	0.00				
1905	0.00				
1904	0.00				
1903	0.00				
1902	0.00				
1901	0.00				
1900	0.00				
1899	0.00				
1898	0.00				
1897	0.00				
1896	0.00				

⁶⁹ Clemson University Public Service Activities is a distinct agricultural component of Clemson University because the institution is a Land Grant university.

⁷⁰ The fiscal year began on January 1st and was concurrent to the calendar year prior to FY 1936. FY 1934 was 18 months long starting on January 1st 1934.

⁷¹ General appropriations for Clemson University Public Service Activities were reported separately from Clemson University Educational and General Activities. No state appropriations were reported prior to FY 1920.

⁷² The Integrated Postsecondary Education Data System (IPEDS) does not distinguish the distribution of federal funds between Clemson University Educational and General Activities and Clemson University Public Service Activities. See methodology note for further discussion.

⁷³ Clemson University Public Service Activities does not involve student instruction so enrollment data is not applicable.

Appendix Table 20: South Carolina State University (Public Service Activities) ⁷⁴					
Fiscal Year ⁷⁵	State General Fund Appropriations ⁷⁶	Total Federal Funds ⁷⁷	FTE Enrollment ⁷⁸	State Appropriations per FTE Enrollment ⁷⁸	Total Federal Funds per FTE Enrollment ⁷⁸
2020	4,857,568.00				
2019	4,545,605.00				
2018	4,286,483.00				
2017	3,408,964.00				
2016	3,405,200.00				
2015	3,385,244.00				
2014	3,013,880.00				
2013	2,281,862.00				
2012	2,014,564.00				
2011	2,071,450.00				
2010	2,807,764.00				
2009	3,811,776.00				
2008	3,879,778.00				
2007	2,856,767.00				
2006	2,370,539.00				
2005	1,959,328.00				
2004	1,536,512.00				
2003	1,355,813.00				
2002	1,395,221.00				
2001	222,000.00				
2000	153,910.00				
1999	153,910.00				
1998	153,910.00				
1997	153,910.00				
1996	53,910.00				
1995	53,910.00				
1994	53,910.00				
1993	53,910.00				
1992	53,910.00				
1991	55,750.00				
1990	48,843.00				
1989	20,497.00				
1988	21,890.00				
1987	21,890.00				
1986	21,890.00				
1985	20,868.00				
1984	20,868.00				
1983	20,868.00				
1982	24,500.00				
1981	25,000.00				
1980	25,000.00				
1979	50,000.00				
1978	0.00				
1977	0.00				
1976	0.00				
1975	0.00				
1974	0.00				
1973	0.00				
1972	0.00				
1971	0.00				
1970	0.00				
1969	0.00				
1968	0.00				
1967	0.00				
1966	0.00				
1965	0.00				
1964	0.00				
1963	0.00				
1962	0.00				
1961	0.00				
1960	0.00				
1959	0.00				
1958	0.00				
1957	0.00				
1956	0.00				
1955	0.00				
1954	0.00				
1953	0.00				

Appendix Table 20: South Carolina State University (Public Service Activities) ⁷⁴					
Fiscal Year ⁷⁵	State General Fund Appropriations ⁷⁶	Total Federal Funds ⁷⁷	FTE Enrollment ⁷⁸	State Appropriations per FTE Enrollment ⁷⁸	Total Federal Funds per FTE Enrollment ⁷⁸
1952	0.00				
1951	0.00				
1950	0.00				
1949	0.00				
1948	0.00				
1947	0.00				
1946	0.00				
1945	0.00				
1944	0.00				
1943	0.00				
1942	0.00				
1941	0.00				
1940	0.00				
1939	0.00				
1938	0.00				
1937	0.00				
1936	0.00				
1934	0.00				
1933	0.00				
1932	0.00				
1931	0.00				
1930	0.00				
1929	0.00				
1928	0.00				
1927	0.00				
1926	0.00				
1925	0.00				
1924	0.00				
1923	0.00				
1922	0.00				
1921	0.00				
1920	0.00				
1919	0.00				
1918	0.00				
1917	0.00				
1916	0.00				
1915	0.00				
1914	0.00				
1913	0.00				
1912	0.00				
1911	0.00				
1910	0.00				
1909	0.00				
1908	0.00				
1907	0.00				
1906	0.00				
1905	0.00				
1904	0.00				
1903	0.00				
1902	0.00				
1901	0.00				
1900	0.00				
1899	0.00				
1898	0.00				
1897	0.00				
1896	0.00				

⁷⁴ SC State University Public Service Activities is a distinct agricultural component of SC State University because the institution is a Land Grant university.

⁷⁵ The fiscal year began on January 1st and was concurrent to the calendar year prior to FY 1936. FY 1934 was 18 months long starting on January 1st 1934.

⁷⁶ General appropriations for SC State University Public Service Activities were reported separately from SC State University Educational and General Activities starting in FY 2001. State appropriations prior to FY 2001 were reported as line items under SC State University. No state appropriations were reported prior to FY 1979.

⁷⁷ The Integrated Postsecondary Education Data System (IPEDS) does not distinguish the distribution of federal funds between SC State University Educational and General Activities and SC State University Public Service Activities. See methodology note for further discussion.

⁷⁸ SC State University Public Service Activities does not involve student instruction so enrollment data is not applicable.

Appendix Table 21A: Medical University of South Carolina ⁷⁹					
Fiscal Year	State General Fund Appropriations	Total Federal Funds ⁸⁰	FTE Enrollment ⁸¹	State Appropriations per FTE Enrollment	Total Federal Funds per FTE Enrollment
2020	84,081,790.00	184,649,825	3,422	24,571	53,960
2019	74,795,296.00	167,075,222	3,357	22,280	49,769
2018	69,040,124.00	156,169,560	3,372	20,475	46,314
2017	63,049,912.00	146,053,098	3,403	18,528	42,919
2016	61,672,126.00	139,096,633	3,307	18,649	42,061
2015	59,847,162.00	131,870,139	3,230	18,529	40,827
2014	58,244,151.00	132,107,287	3,134	18,585	42,153
2013	51,644,480.00	137,866,774	3,101	16,654	44,459
2012	50,809,602.00	136,070,993	3,016	16,847	45,116
2011	53,423,524.00	136,217,861	2,871	18,608	47,446
2010	74,085,527.00	128,151,975	2,776	26,688	46,164
2009	94,622,513.00	119,782,720	2,755	34,346	43,478
2008	89,481,897.00	117,751,459	2,816	31,776	41,815
2007	85,906,706.00	116,301,547	2,776	30,946	41,895
2006	82,140,596.00	120,472,305	2,733	30,055	44,081
2005	80,160,648.00	121,833,685	2,593	30,914	46,986
2004	82,523,657.00	115,468,784	2,390	34,529	48,313
2003	99,860,527.00	103,270,682	2,334	42,785	44,246
2002	105,994,219.00	83,238,915	2,367	44,780	35,166
2001	91,473,042.00	69,314,431	2,379	38,450	29,136
2000	88,431,323.00	57,617,281	2,347	37,678	24,549
1999	84,081,790.00	51,391,053	2,321	36,227	22,142
1998	85,342,407.00	40,283,690	2,296	37,170	17,545
1997	82,152,677.00	40,999,862	2,299	35,734	17,834
1996	79,302,763.00	44,125,813	2,317	34,226	19,044
1995	79,379,571.00	40,748,991	2,226	35,660	18,306
1994	75,414,769.00	31,455,588	2,218	34,001	14,182
1993	77,666,205.00	25,497,410	2,292	33,886	11,125

⁷⁹ Because the Medical University of South Carolina is a special purpose institution, funding and student enrollment is different from all of the other South Carolina public institutions. See methodology section for further discussion.

⁸⁰ Total Federal funds are all of the federal funds reported by the institution to the Integrated Postsecondary Education Data System (IPEDS). Federal fund data are not available prior to FY 1987.

⁸¹ FTE enrollment data between FY 1993 and 2020 are the total Fall semester FTE enrollments reported in the Commission on Higher Education Statistical Abstracts.

Appendix Table 21B: Medical University of South Carolina ⁷⁹						
Fiscal Year	State General Fund Appropriations ⁸²	Total Federal Funds ⁸³	Headcount Enrollment ⁸⁴	State Appropriations per Headcount Enrollment	Total Federal Funds per Headcount Enrollment	
1992	78,397,424.00	20,764,236	2,283	34,340	9,095	
1991	83,006,244.00	17,755,941	2,219	37,407	8,002	
1990	76,345,953.00	14,319,938	2,194	34,798	6,527	
1989	70,772,383.00	13,627,812	2,499	28,320	5,453	
1988	68,707,576.00	12,686,770	2,435	28,217	5,210	
1987	69,334,531.00	13,555,597	2,468	28,093	5,493	
1986	69,175,396.00		2,388	28,968		
1985	63,380,476.00		2,422	26,169		
1984	53,579,830.00		2,254	23,771		
1983	43,154,461.00		2,262	19,078		
1982	70,770,791.00		2,320	30,505		
1981	69,854,875.00		2,399	29,118		
1980	65,422,668.00		2,284	28,644		
1979	56,120,909.00		2,489	22,548		
1978	48,921,018.00		2,404	20,350		
1977	40,599,541.00		2,303	17,629		
1976	40,838,202.00		2,216	18,429		
1975	40,637,265.00		2,020	20,117		
1974	31,156,731.00		1,918	16,244		
1973	21,944,024.00		1,693	12,962		
1972	16,427,646.00		1,478	11,115		
1971	10,133,295.00		1,185	8,551		
1970	8,468,429.00		840	10,081		
1969	6,061,159.00		939	6,455		
1968	4,432,972.00		895	4,953		
1967	2,966,517.00		753	3,940		
1966	1,789,815.00		717	2,496		
1965	1,379,281.23		667	2,068		
1964	1,334,485.00		635	2,102		
1963	1,230,085.00		648	1,898		
1962	1,153,528.00		642	1,797		
1961	1,110,000.00		636	1,745		
1960	1,080,380.00		688	1,570		
1959	1,074,380.00		692	1,553		
1958	984,339.00		697	1,412		
1957	993,700.00		669	1,485		
1956	949,350.00		647	1,467		
1955	996,300.00		582	1,712		
1954	896,905.00		532	1,686		
1953	784,210.00		514	1,526		
1952	719,212.00		544	1,322		
1951	641,500.00					
1950	515,620.00					
1949	517,017.00					
1948	487,000.00					
1947	320,000.00					
1946	275,000.00					
1945	260,000.00					
1944	223,000.00					
1943	225,000.00					
1942	185,000.00					
1941	163,712.50					
1940	143,500.00					
1939	150,000.00					
1938	140,000.00					
1937	110,000.00					
1936	80,000.00					
1934	65,750.00					
1933	78,000.00					
1932	92,000.00					
1931	120,000.00					
1930	142,500.00					
1929	141,750.00		282	503		
1928	130,550.00		284	460		
1927	127,185.00		281	453		
1926	130,800.00		289	453		
1925	123,750.00					

Appendix Table 21B: Medical University of South Carolina ⁷⁹					
Fiscal Year	State General Fund Appropriations ⁸²	Total Federal Funds ⁸³	Headcount Enrollment ⁸⁴	State Appropriations per Headcount Enrollment	Total Federal Funds per Headcount Enrollment
1924	120,775.00		274	441	
1923	128,445.37		282	455	
1922	85,455.00		277	309	
1921	100,117.50		265	378	
1920	96,067.00		205	469	
1919	49,737.34		161	309	
1918	47,620.00		148	322	
1917	39,820.00		77	517	
1916	33,300.00		90	370	
1915	33,315.00		84	397	
1914	29,800.00		111	268	
1913	0.00		148	0	
1912	0.00		163	0	
1911	0.00				
1910	0.00		261	0	
1909	0.00				
1908	0.00				
1907	0.00				
1906	0.00		142	0	
1905	0.00				
1904	0.00				
1903	0.00				
1902	0.00				
1901	0.00				
1900	0.00				
1899	0.00				
1898	0.00				
1897	0.00				
1896	0.00				

⁷⁹ Because the Medical University of South Carolina is a special purpose institution, funding and student enrollment is different from all of the other South Carolina public institutions. See methodology notes for further discussion.

⁸² State appropriations were not reported for the Medical School of South Carolina prior to FY 1914.

⁸³ Total Federal funds are all of the federal funds reported by the institution to the Integrated Postsecondary Education Data System (IPEDS). Federal fund data are not available prior to FY 1987.

⁸⁴ Headcount enrollment data between FY 1990 and 1992 are the total Fall headcount enrollments reported in the Commission on Higher Education Statistical Abstracts. Headcount enrollment data between FY 1976 and 1989 are the total Fall headcount enrollments including resident and interns reported in the Commission on Higher Education Statistical Abstracts. Headcount enrollment data between FY 1972 and 1975 years are the total headcount enrollments including resident and interns reported in the MUSC annual reports. Headcount enrollment data between FY 1952 and 1971 and FY 1929 and 1906 years are the total headcount enrollments reported in the Department of Education Superintendent annual reports.

Appendix Table 22: South Carolina Board of Technical and Comprehensive Education (Total Funding) ⁸⁵					
Fiscal Year	State General Fund Appropriations ⁸⁶	Total Federal Funds ⁸⁷	FTE Enrollment ⁸⁸	State Appropriations per FTE Enrollment	Total Federal Funds per FTE Enrollment
2020	162,604,098.00	195,973,726	48,706	3,338	4,024
2019	154,431,635.00	166,209,102	48,792	3,165	3,406
2018	149,033,890.00	174,025,455	51,896	2,872	3,353
2017	140,515,257.00	176,594,248	52,940	2,654	3,336
2016	132,616,954.00	202,340,738	55,411	2,393	3,652
2015	123,709,884.00	234,669,627	59,246	2,088	3,961
2014	119,895,244.00	265,457,634	61,893	1,937	4,289
2013	118,644,294.00	269,807,499	63,463	1,870	4,251
2012	106,317,224.00	271,297,592	64,227	1,655	4,224
2011	105,271,702.00	294,675,066	64,597	1,630	4,562
2010	134,145,496.00	266,109,286	62,504	2,146	4,257
2009	170,427,249.00	162,922,524	54,033	3,154	3,015
2008	162,411,264.00	133,703,561	50,932	3,189	2,625
2007	156,229,935.00	116,953,497	48,755	3,204	2,399
2006	146,881,792.00	112,944,514	48,572	3,024	2,325
2005	143,203,883.00	119,206,871	48,672	2,942	2,449
2004	143,126,693.00	131,334,991	48,302	2,963	2,719
2003	173,112,611.00	118,768,927	45,596	3,797	2,605
2002	165,475,232.00	95,010,555	41,151	4,021	2,309
2001	151,498,020.00	69,606,090	39,035	3,881	1,783
2000	147,084,264.00	64,593,598	38,191	3,851	1,691
1999	144,399,338.00	61,870,665	37,223	3,879	1,662
1998	142,068,985.00	58,110,169	36,254	3,919	1,603
1997	137,126,554.00	50,427,752	35,454	3,868	1,422
1996	138,091,414.00	47,243,177	35,382	3,903	1,335
1995	135,502,687.00	45,283,530	32,688	4,145	1,385
1994	127,838,809.00	43,326,156	33,581	3,807	1,290
1993	125,475,035.00	41,882,529	35,373	3,547	1,184
1992	114,330,873.00	37,039,285	36,890	3,099	1,004
1991	118,884,589.00	30,586,098	33,154	3,586	923
1990	108,638,607.00	28,599,122	31,025	3,502	922
1989	94,523,249.00	26,670,877	27,564	3,429	968
1988	88,328,283.00	22,835,652	25,879	3,413	882
1987	88,336,827.00	21,467,133	26,347	3,353	815
1986	93,526,207.00	23,557,403	25,924	3,608	909
1985	74,854,228.00	21,972,010	26,276	2,849	836
1984	63,406,594.00	25,950,728	28,667	2,212	905
1983	56,615,990.00	21,017,148	30,990	1,827	678
1982	56,157,034.00	21,365,748	30,160	1,862	708
1981	51,481,120.00	21,817,219	29,297	1,757	745
1980	47,451,674.00	17,946,647	28,011	1,694	641
1979	41,797,172.00	16,924,489	32,214	1,297	525
1978	33,382,133.00	10,530,407	33,444	998	315
1977	28,343,275.00	10,530,407	32,656	868	322
1976	27,758,484.00	8,832,718	36,010	771	245
1975	27,134,125.00	7,874,101	29,417	922	268
1974	21,245,778.00	7,427,849	21,808	974	341
1973	17,583,462.00				
1972	13,574,829.00				
1971	12,352,115.00				
1970	10,786,053.00				
1969	7,287,360.00				
1968	6,612,601.00				
1967	3,517,018.00				
1966	2,151,356.00				
1965	1,851,972.00				
1964	1,595,795.00				

⁸⁵ Appendix Table 22 contains the total State General Fund appropriations allocated to the State Board for Technical and Comprehensive Education. See Appendix Table 12 for the state appropriations allocated to the technical colleges.

⁸⁶ No state appropriations were reported for the State Board for Technical and Comprehensive Education prior to FY 1964 fiscal year. State appropriations between FY 1964 and 1972 were reported under the Advisory Committee for Technical Training.

⁸⁷ Total Federal funds are all of the federal funds reported by the institution to the Integrated Postsecondary Education Data System (IPEDS). Total federal funds reported between FY 1974 and 1986 are from the State Board for Technical and Comprehensive Education Annual report. Federal fund data prior to FY 1974 are not available.

⁸⁸ FTE enrollment data between FY 1970 and 2020 are the total Fall semester FTE enrollments reported in the Commission on Higher Education Statistical Abstracts. FTE Enrollments between FY 1974 and 1979 are from the State Board for Technical and Comprehensive Education Annual report.